



KINGSWOOD CROSSING

1715 E 13TH STREET, BROOKLYN, NY 11229



RETHINK. RECREATE. REDEVELOP.



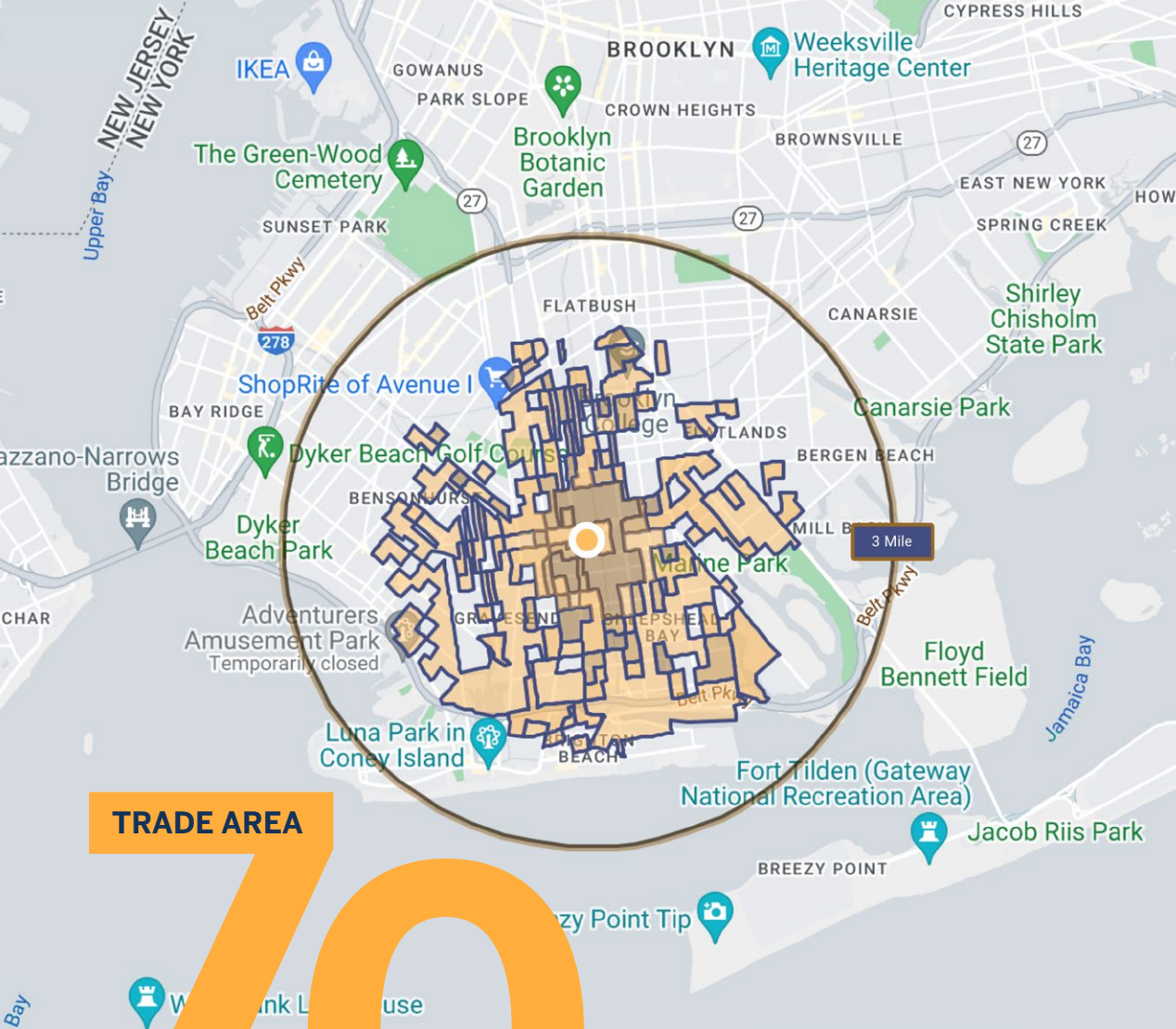
KINGS COUNTY'S DESTINATION FOR EVERYDAY SHOPPING

Kingswood Crossing is located along Kings Highway in the Midwood neighborhood of south-central Brooklyn. Anchored by Marshalls and Target, as well as 49,000 SF of Class A office space, the property is in a densely populated area featuring close to 1 million residents within 3-miles. The property is complimented by Kingswood Center, an Urban Edge property located across the street, which features retail and Class A office space. The property is just one block from the B/Q subway stop that serves an estimated 6 million riders per year.

Kingswood Crossing

1715 E 13th Street, Brooklyn, NY 11229





TRADE AREA

70%

DEMOGRAPHICS

Sources: ESRI and CreditnTell. CreditnTell's Tru Trade is based on geo-fenced data embedded in over 500 applications on tens of millions of mobile devices nationwide.

KINGSWOOD CROSSING | 1715 E 13TH STREET, BROOKLYN, NY 11229

POPULATION

461,731
Tru Trade*

993,484
3 Mile

1,825,535
5 Mile

FAMILY HOUSEHOLDS

168,869
Tru Trade*

343,785
3 Mile

653,890
5 Mile

AVERAGE HH INCOME

\$86,940
Tru Trade*

\$101,550
3 Mile

\$107,591
5 Mile

COLLEGE EDUCATION

37.3%
Tru Trade*

39.2%
3 Mile

39.6%
5 Mile

*Tru Trade Area; 2 Miles

URBAN EDGE PROPERTIES

AERIAL

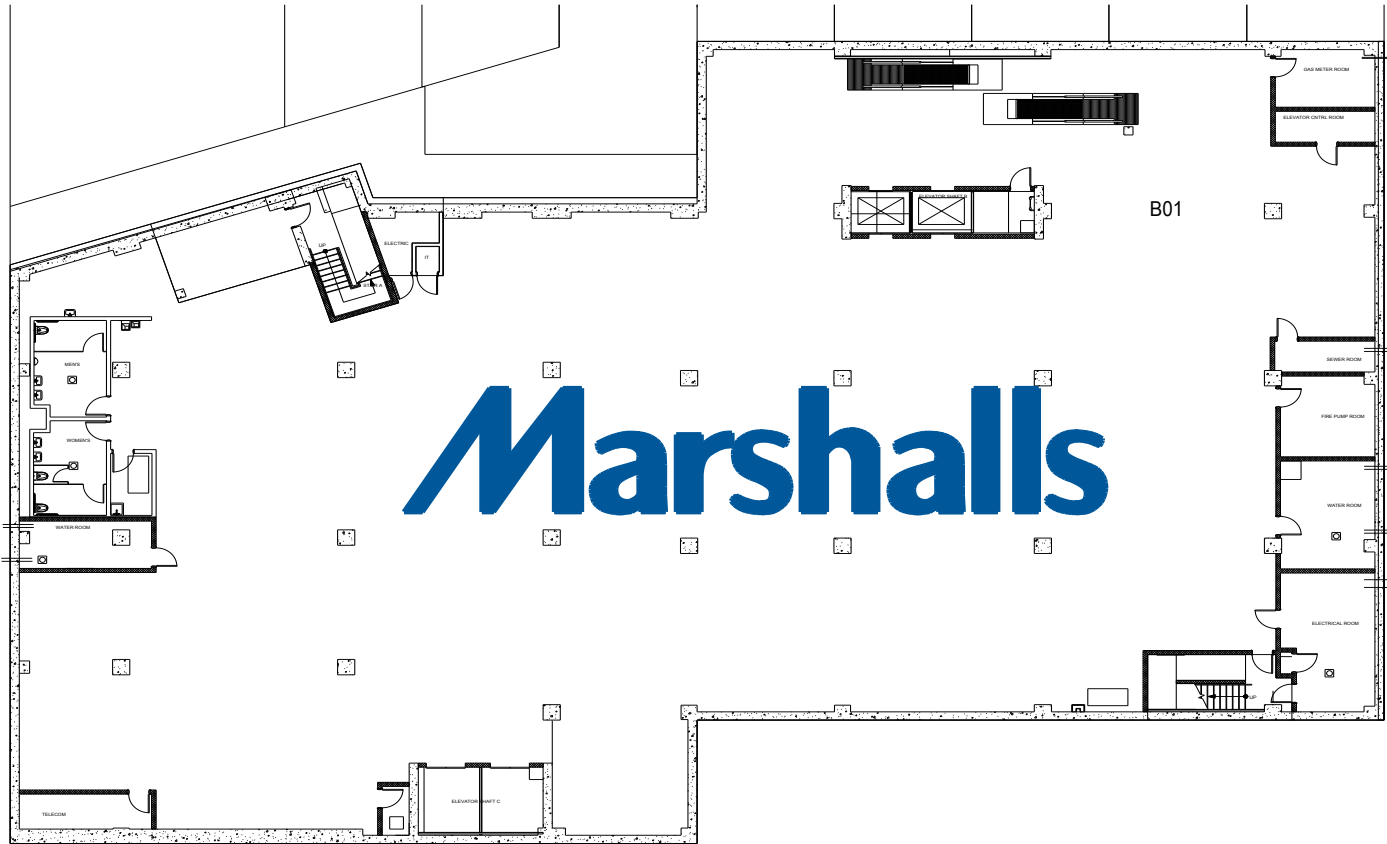


Kingswood Crossing is located in a densely populated borough of Brooklyn and is conveniently next to Kings Highway. Surrounded by bus stops and a nearby railroad, the property is accessible to extensive commuter traffic.

SITE PLAN - FLOOR -01

TENANTS	SQFT
B01 Marshalls	19,142

HIGHLIGHTS
Total SF 19,142



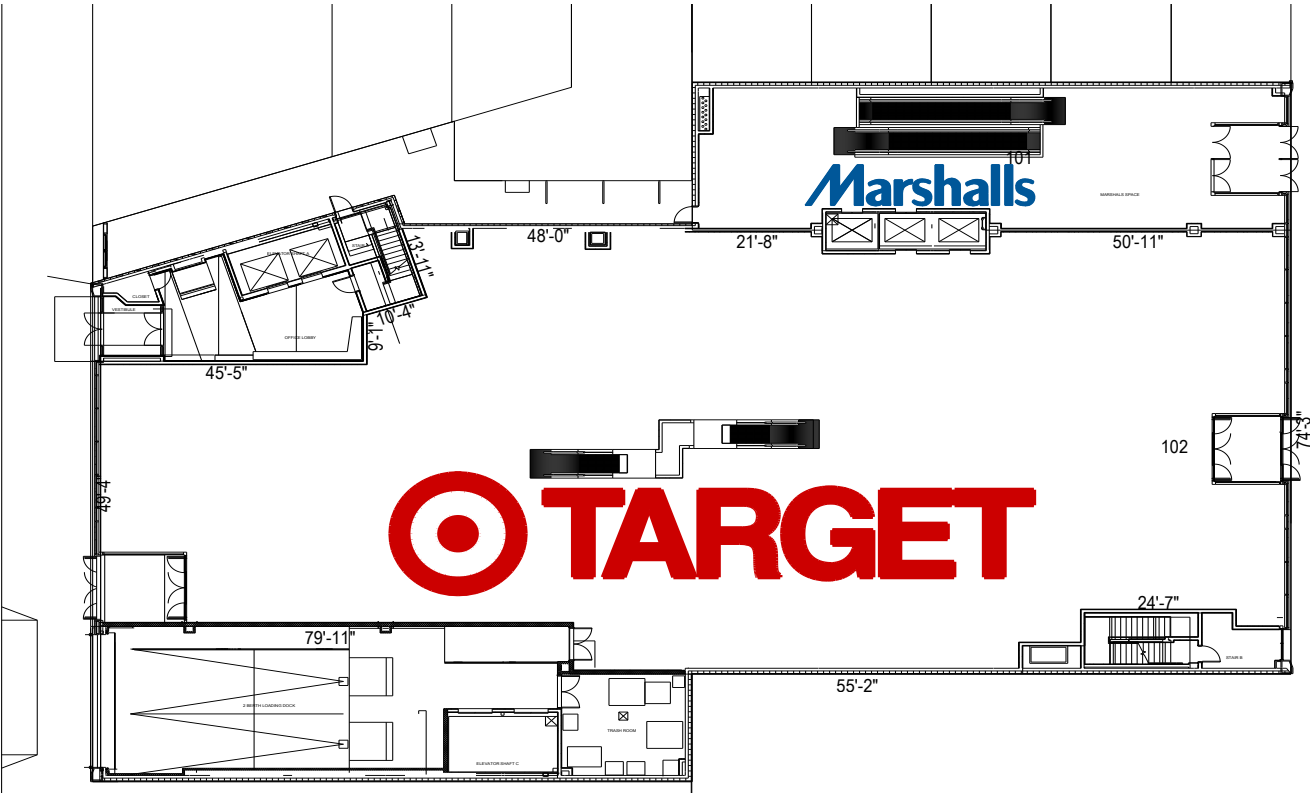
SITE PLAN - FLOOR 01

TENANTS

101	Marshalls	2,662
102	Target	14,184

HIGHLIGHTS

Total SF	16,846
----------	--------



SITE PLAN - FLOOR 02

TENANTS

201 Target Corporation 19,542

HIGHLIGHTS

Total SF 19,542



SITE PLAN - FLOOR 03

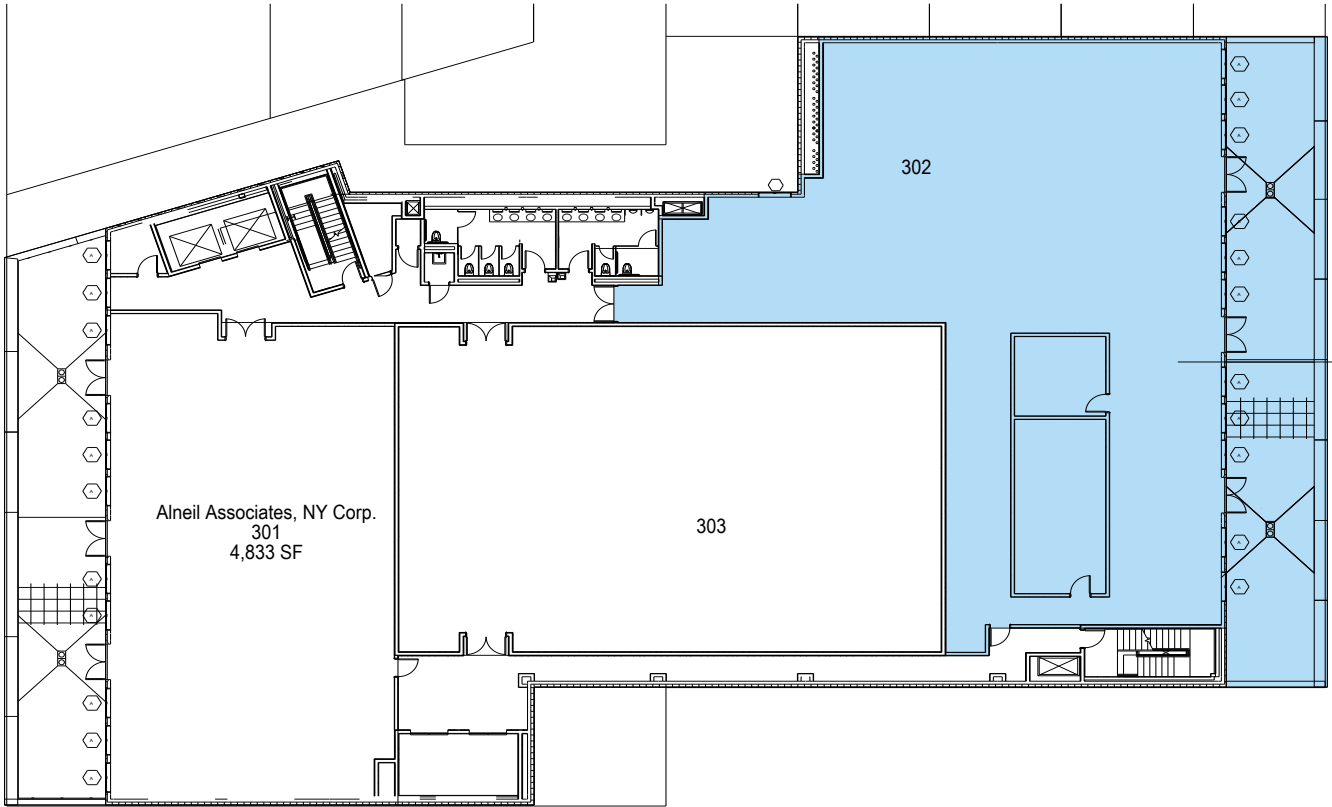
TENANTS

SQFT

301	Alneil Associates	4,833
302	Available	7,453
303	Available	4,355

HIGHLIGHTS

Total SF	16,641
----------	--------



SITE PLAN - FLOOR 04

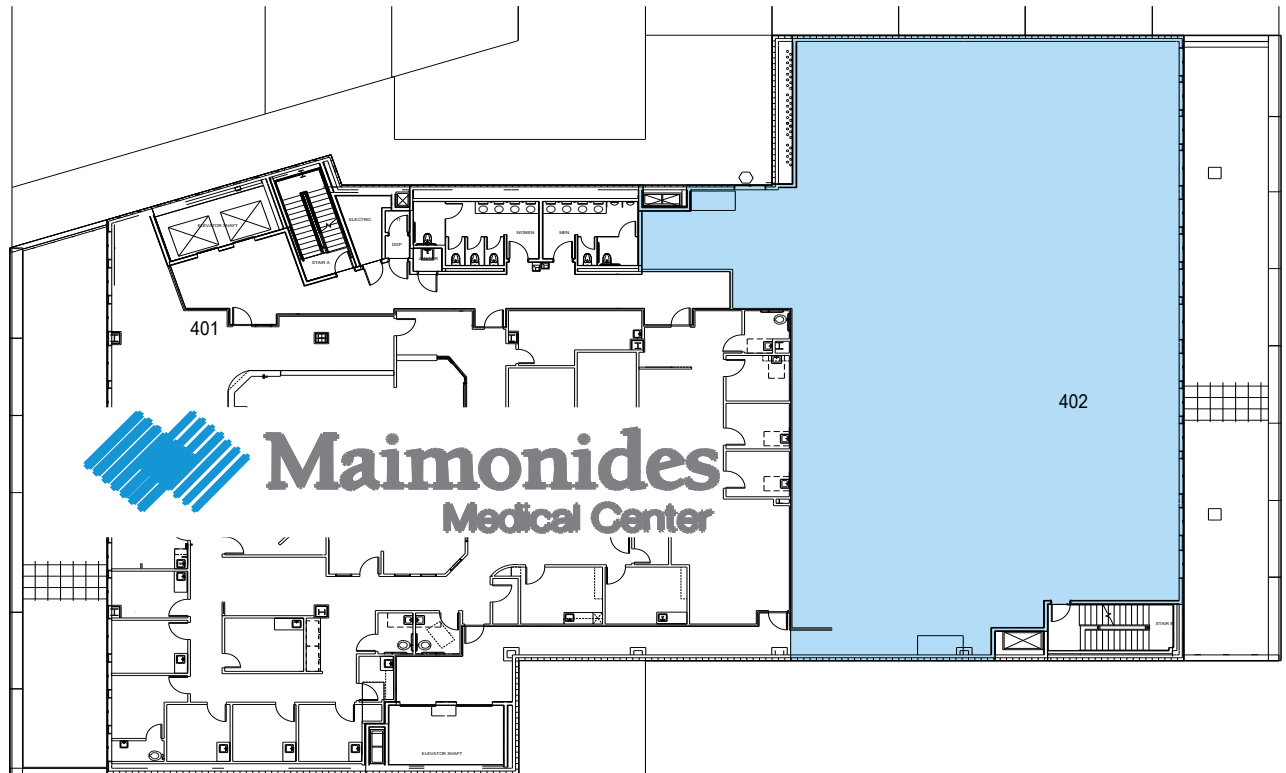
TENANTS

SQFT

401	Maimonides Medical Center	9,641
402	Available	6,965

HIGHLIGHTS

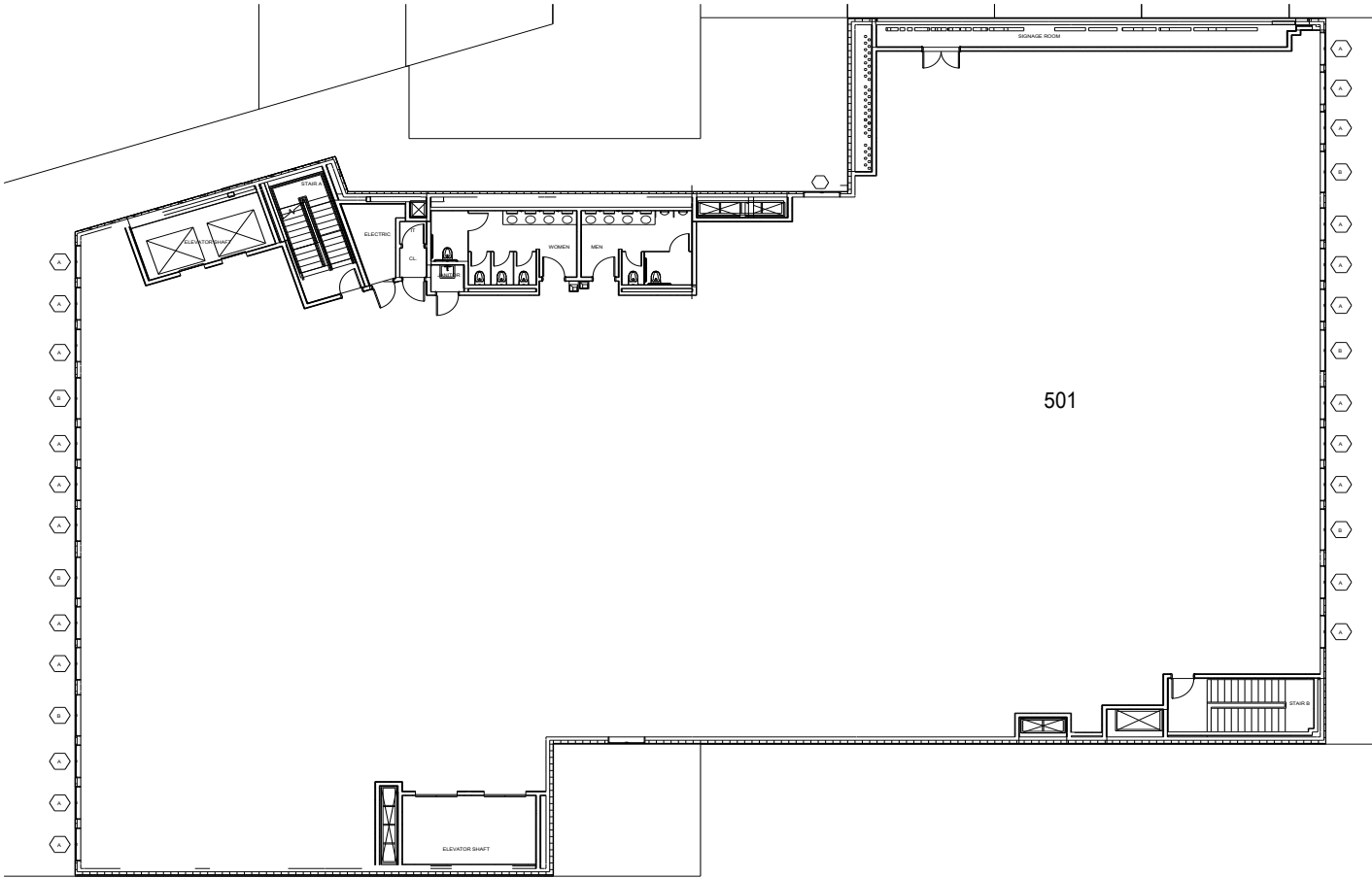
Total SF	16,606
----------	--------



SITE PLAN - FLOOR 05

TENANTS	SQFT
501 VNS of New York	21,737

HIGHLIGHTS
Total SF 20,300



CONTACT US



Leasing Agent
Scott Auster
201.571.3507
sauster@uedge.com



Leasing Agent
Joshua Birns
212.956.2235
jbirns@uedge.com



Specialty Leasing
Patricia Zafferese
201.882.7506
pzafferese@uedge.com



Corporate

New York

888 Seventh Avenue, 6th Floor
New York, New York, 10019
General Inquiries:
212.956.2556
Leasing: 844.614.4114

Management

New Jersey

210 Route 4 East
Paramus, New Jersey, 07652
General Inquiries: 201.571.3500
Leasing: 844.614.4114