

# Kingswood Crossing

1715 E 13th Street, Brooklyn, NY 11229



GLA: 112,752 SF

Acres: 0.51

Parking Spaces: 257/Ratio: SF

County: Kings County

## For Leasing Contact:

Joshua Birns

Tel: 212-956-2235

jbirns@uedge.com

UEDGE.COM

## Demographics: 3-Mile Radius



Population  
981,916



Households  
341,759



Daytime Pop.  
861,056



AHFI  
\$96,958



MHI  
\$64,901

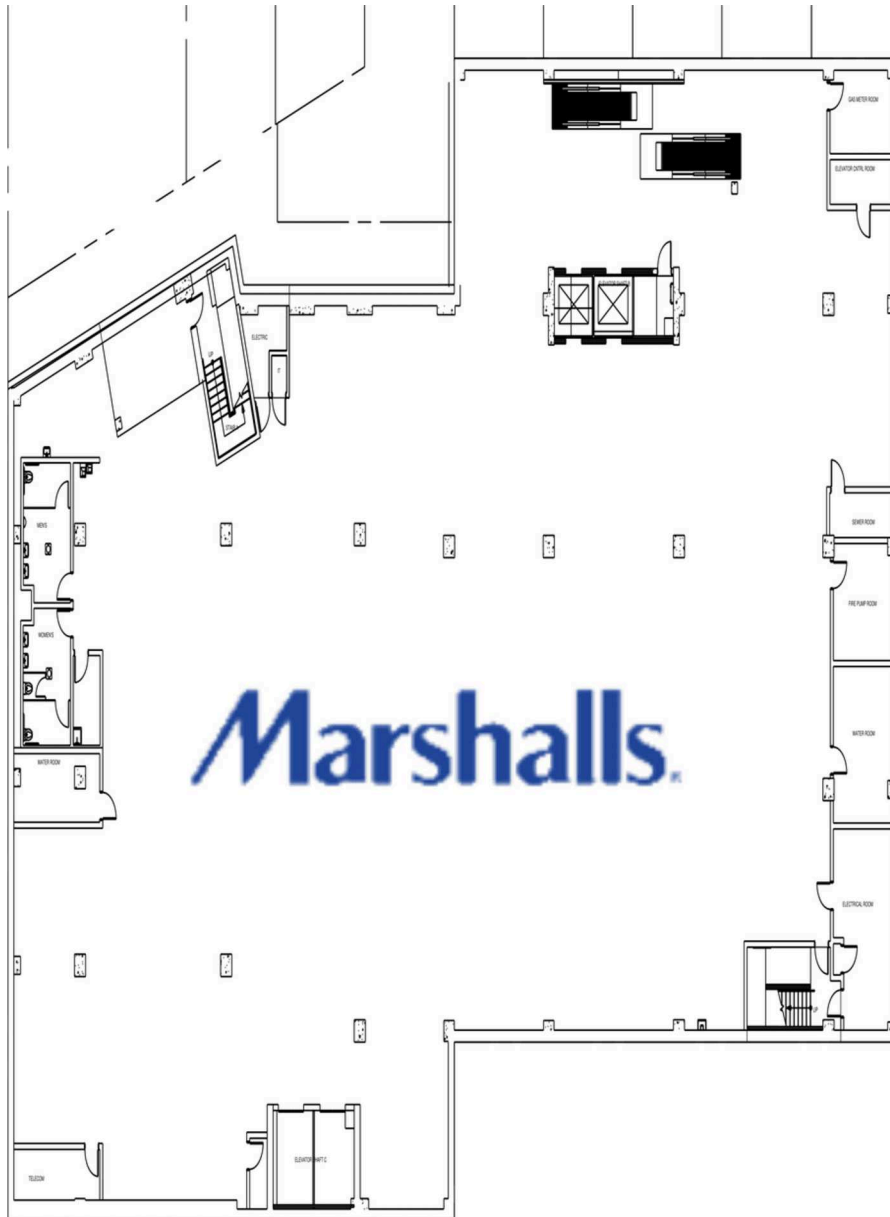


College Ed.  
39.9%

Demographics data Provided by: ESRI

# Kingswood Crossing

1715 E 13th Street, Brooklyn, NY 11229



## Retail Spaces (SF)

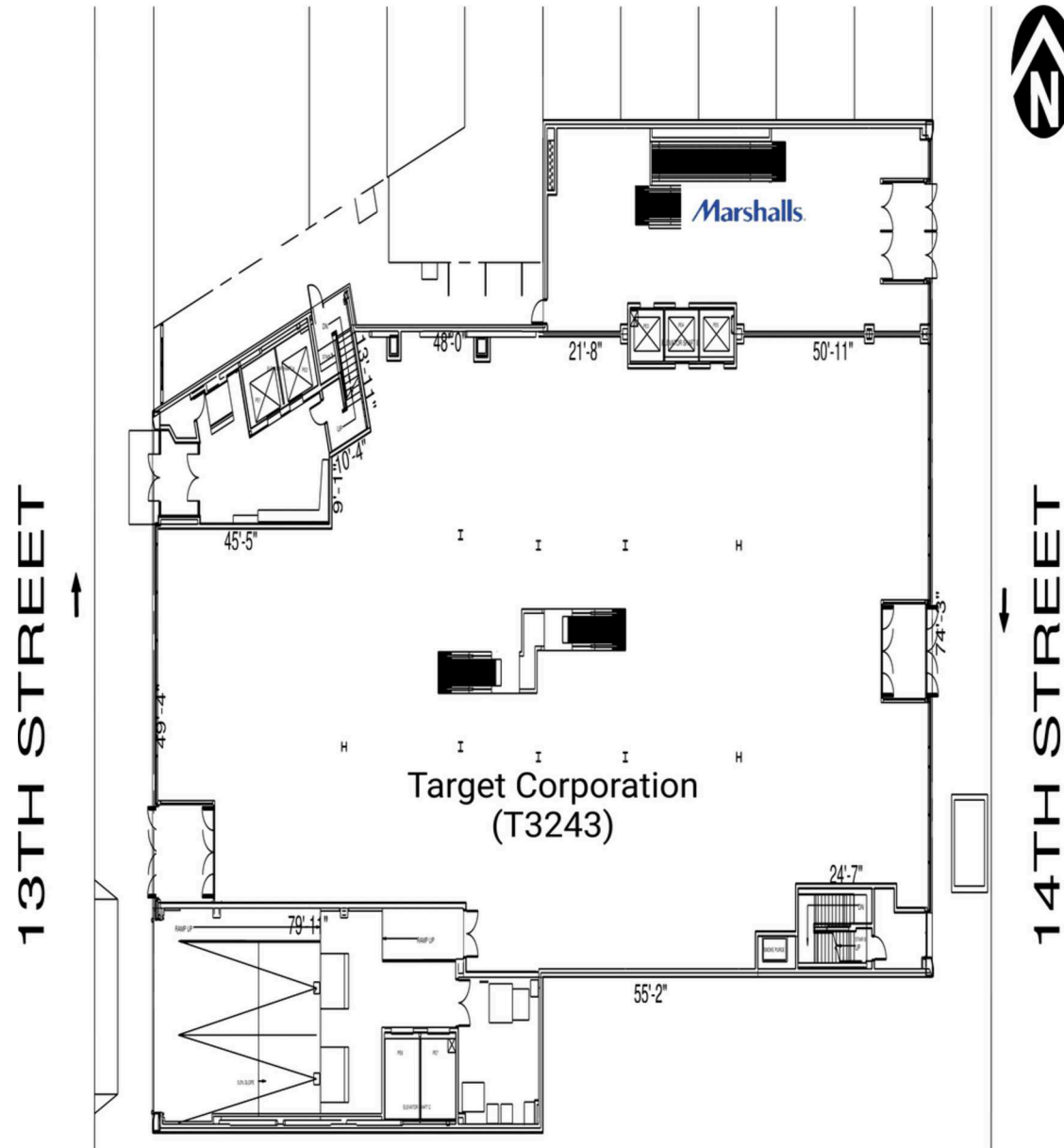
B01 Marshalls 19,142

THIS EXHIBIT SHALL NOT BE DEEMED A WARRANTY, REPRESENTATION OR AGREEMENT BY LANDLORD THAT THE LAYOUT OR CONFIGURATION OF THE SHOPPING CENTER, OR ANY PART THEREOF, SHALL REMAIN AS SHOWN HEREON. LANDLORD RESERVES THE RIGHT TO MODIFY THE SHOPPING CENTER, OR ANY PART THEREOF, IN ACCORDANCE WITH THE PROVISIONS OF THE LEASE.



# Kingswood Crossing

1715 E 13th Street, Brooklyn, NY 11229



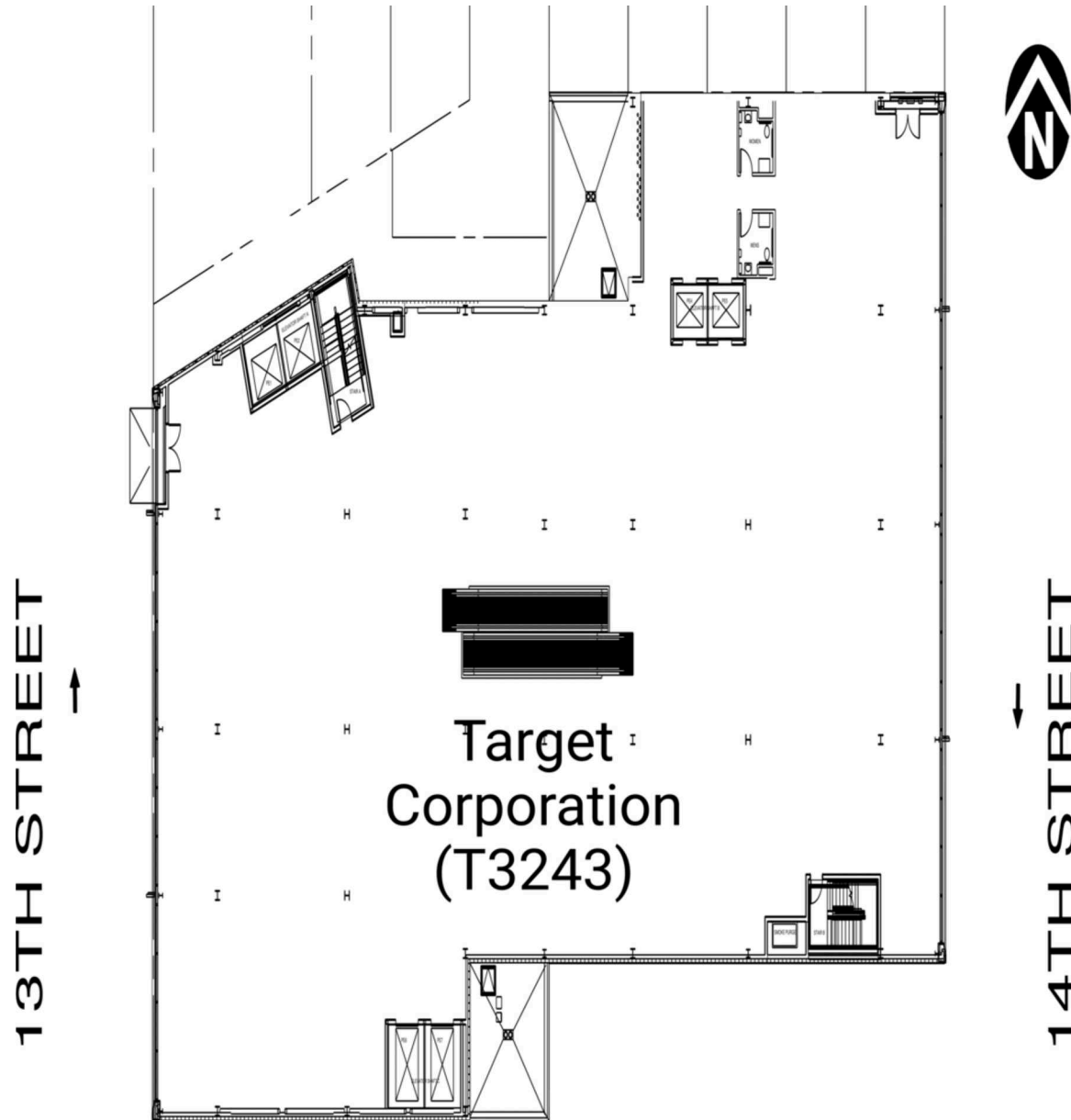
## Retail Spaces (SF)

101	Marshalls	2,662
102	Target Corporation (T3243)	14,184

THIS EXHIBIT SHALL NOT BE DEEMED A WARRANTY, REPRESENTATION OR AGREEMENT BY LANDLORD THAT THE LAYOUT OR CONFIGURATION OF THE SHOPPING CENTER, OR ANY PART THEREOF, SHALL REMAIN AS SHOWN HEREON. LANDLORD RESERVES THE RIGHT TO MODIFY THE SHOPPING CENTER, OR ANY PART THEREOF, IN ACCORDANCE WITH THE PROVISIONS OF THE LEASE.

# Kingswood Crossing

1715 E 13th Street, Brooklyn, NY 11229



## Retail Spaces (SF)

201 Target Corporation (T3243)	19,542
--------------------------------	--------

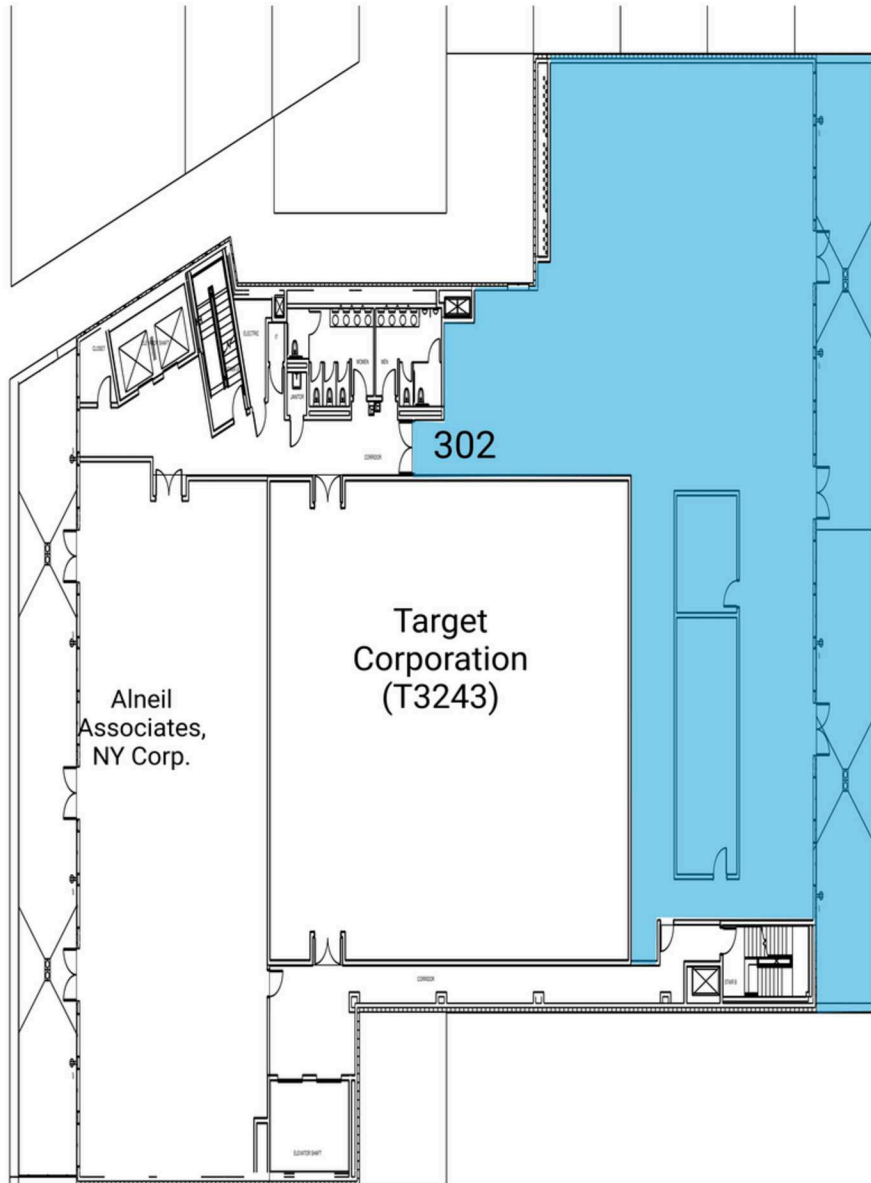
THIS EXHIBIT SHALL NOT BE DEEMED A WARRANTY, REPRESENTATION OR AGREEMENT BY LANDLORD THAT THE LAYOUT OR CONFIGURATION OF THE SHOPPING CENTER, OR ANY PART THEREOF, SHALL REMAIN AS SHOWN HEREON. LANDLORD RESERVES THE RIGHT TO MODIFY THE SHOPPING CENTER, OR ANY PART THEREOF, IN ACCORDANCE WITH THE PROVISIONS OF THE LEASE.

# Kingswood Crossing

1715 E 13th Street, Brooklyn, NY 11229



13TH STREET



14TH STREET

## Retail Spaces (SF)

301	Alneil Associates, NY Corp.	4,833
302	Available	7,800
303	Target Corporation (T3243)	4,355

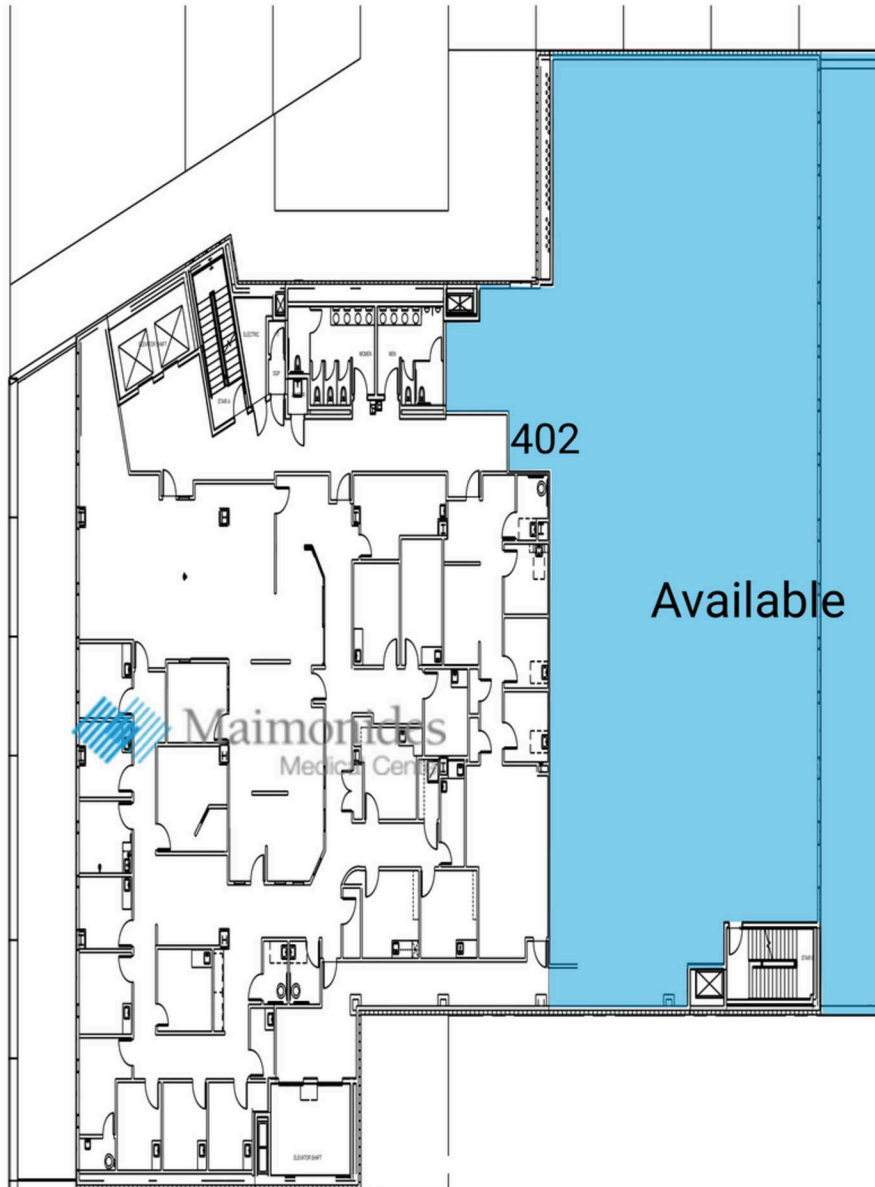
THIS EXHIBIT SHALL NOT BE DEEMED A WARRANTY, REPRESENTATION OR AGREEMENT BY LANDLORD THAT THE LAYOUT OR CONFIGURATION OF THE SHOPPING CENTER, OR ANY PART THEREOF, SHALL REMAIN AS SHOWN HEREON. LANDLORD RESERVES THE RIGHT TO MODIFY THE SHOPPING CENTER, OR ANY PART THEREOF, IN ACCORDANCE WITH THE PROVISIONS OF THE LEASE.

# Kingswood Crossing

1715 E 13th Street, Brooklyn, NY 11229



13TH STREET



## Retail Spaces (SF)

401	Maimonides Medical Center	9,641
402	Available	8,856

14TH STREET



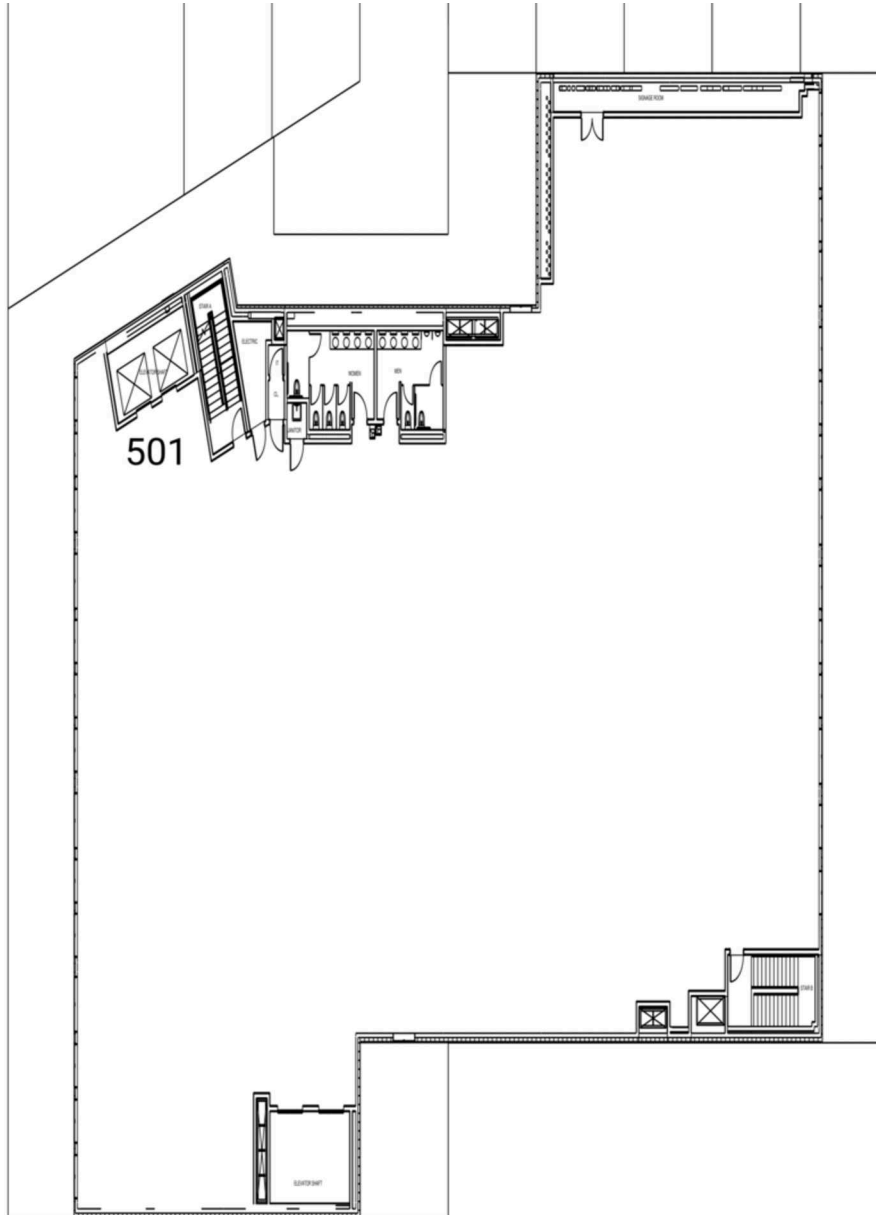
THIS EXHIBIT SHALL NOT BE DEEMED A WARRANTY, REPRESENTATION OR AGREEMENT BY LANDLORD THAT THE LAYOUT OR CONFIGURATION OF THE SHOPPING CENTER, OR ANY PART THEREOF, SHALL REMAIN AS SHOWN HEREON. LANDLORD RESERVES THE RIGHT TO MODIFY THE SHOPPING CENTER, OR ANY PART THEREOF, IN ACCORDANCE WITH THE PROVISIONS OF THE LEASE.

# Kingswood Crossing

1715 E 13th Street, Brooklyn, NY 11229



13TH STREET



14TH STREET

## Retail Spaces (SF)

501 VNS Health 21,737

THIS EXHIBIT SHALL NOT BE DEEMED A WARRANTY, REPRESENTATION OR AGREEMENT BY LANDLORD THAT THE LAYOUT OR CONFIGURATION OF THE SHOPPING CENTER, OR ANY PART THEREOF, SHALL REMAIN AS SHOWN HEREON. LANDLORD RESERVES THE RIGHT TO MODIFY THE SHOPPING CENTER, OR ANY PART THEREOF, IN ACCORDANCE WITH THE PROVISIONS OF THE LEASE.