

Kingswood Crossing

1715 E 13th Street, Brooklyn, NY 11229



GLA: 112,752 SF

Acres: 0.51

Parking Spaces: 257/Ratio: SF

County: Kings County

For Leasing Contact:

Joshua Birns

Tel: 212-956-2235

jbirns@uedge.com

UEDGE.COM

Demographics: 3-Mile Radius



Population
981,916



Households
341,759



Daytime Pop.
861,056



AHFI
\$96,958



MHHI
\$64,901



College Ed.
39.9%

Demographics data Provided by: ESRI

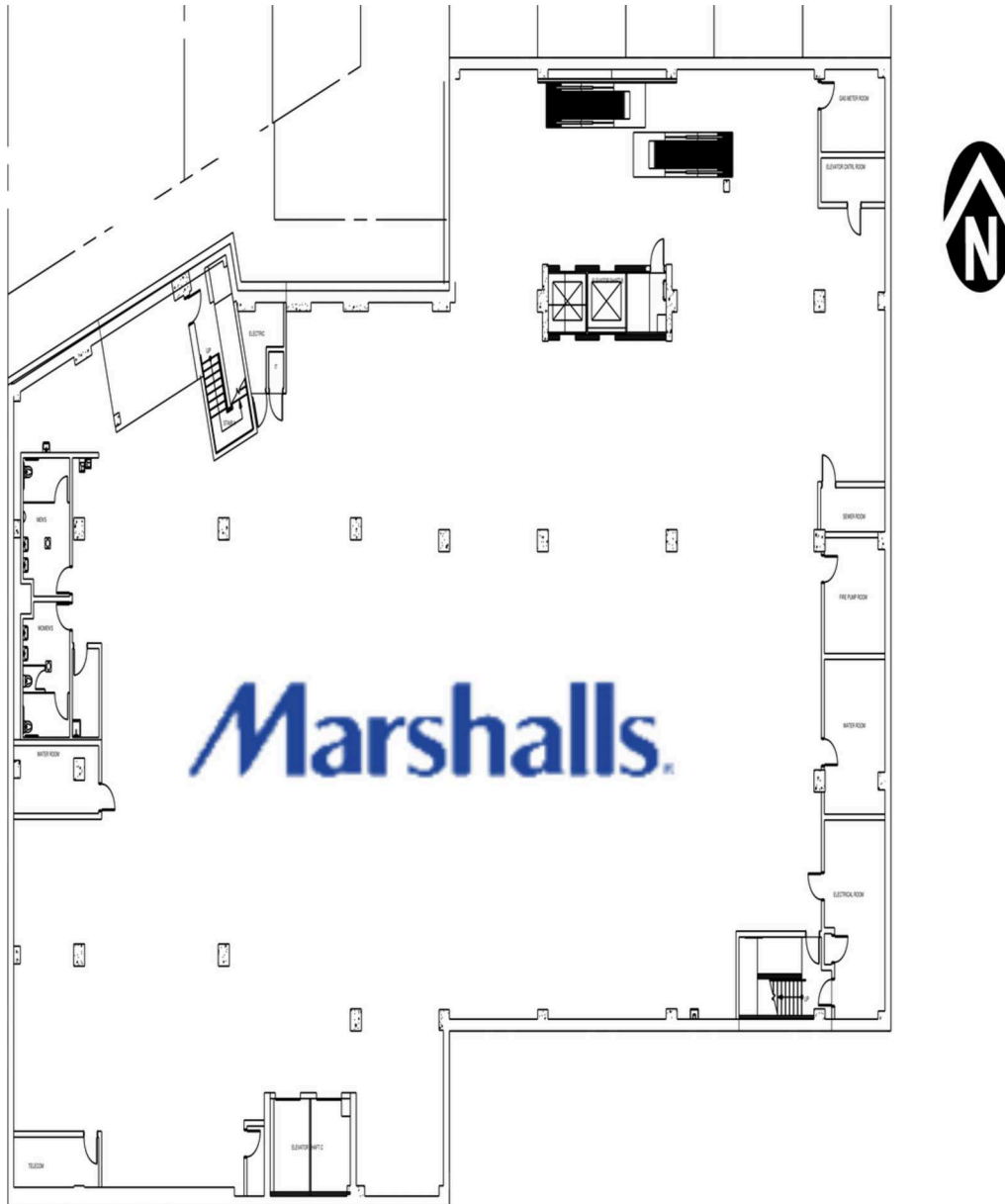
1715 E 13th Street, Brooklyn, NY 11229

1715 E 13th Street, Brooklyn, NY 11229



Retail Spaces (SF)

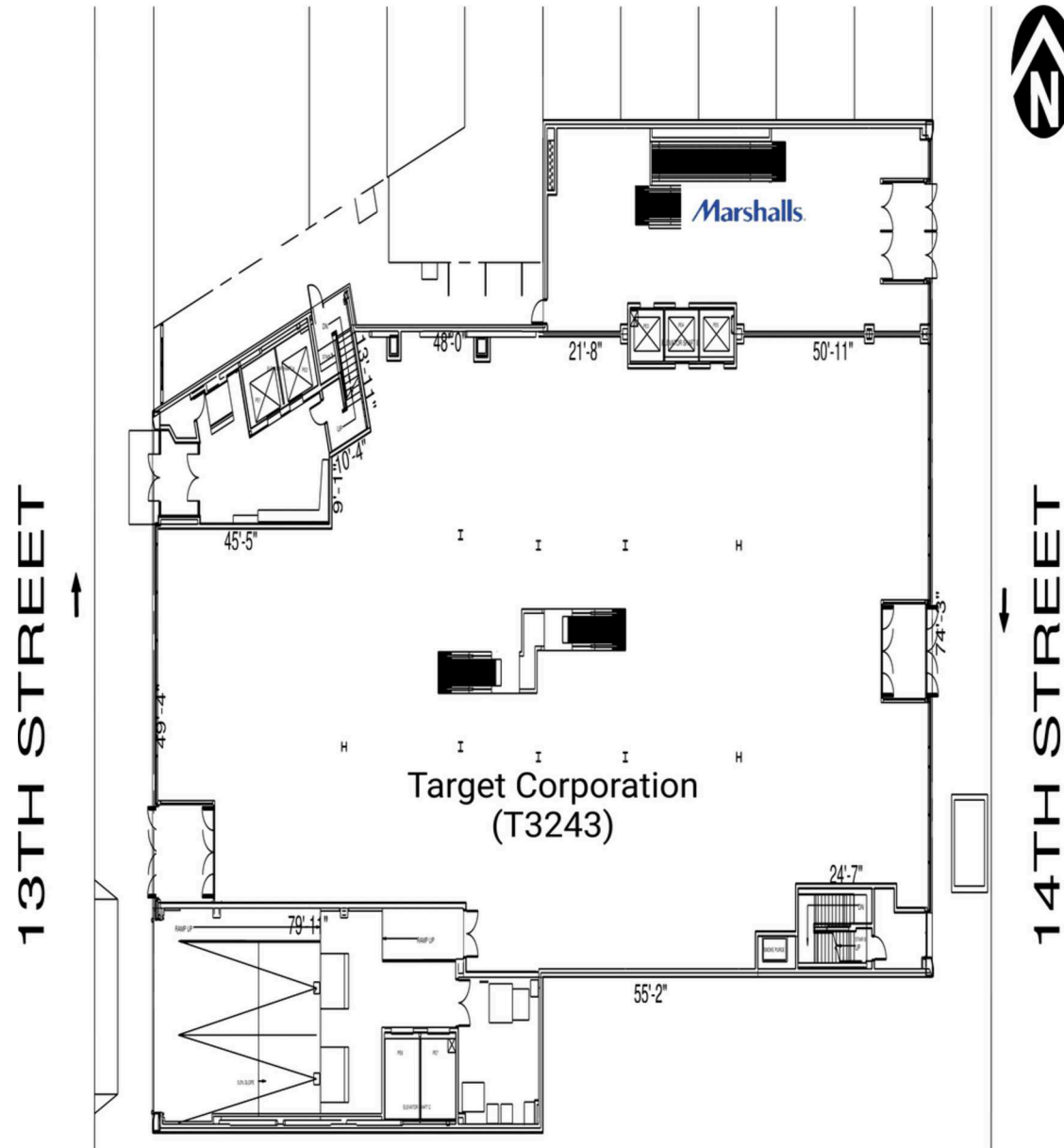
B01	Marshalls	19,142
-----	-----------	--------



THIS EXHIBIT SHALL NOT BE DEEMED A WARRANTY, REPRESENTATION OR AGREEMENT BY LANDLORD THAT THE LAYOUT OR CONFIGURATION OF THE SHOPPING CENTER, OR ANY PART THEREOF, SHALL REMAIN AS SHOWN HEREON. LANDLORD RESERVES THE RIGHT TO MODIFY THE SHOPPING CENTER, OR ANY PART THEREOF, IN ACCORDANCE WITH THE PROVISIONS OF THE LEASE.

Kingswood Crossing

1715 E 13th Street, Brooklyn, NY 11229



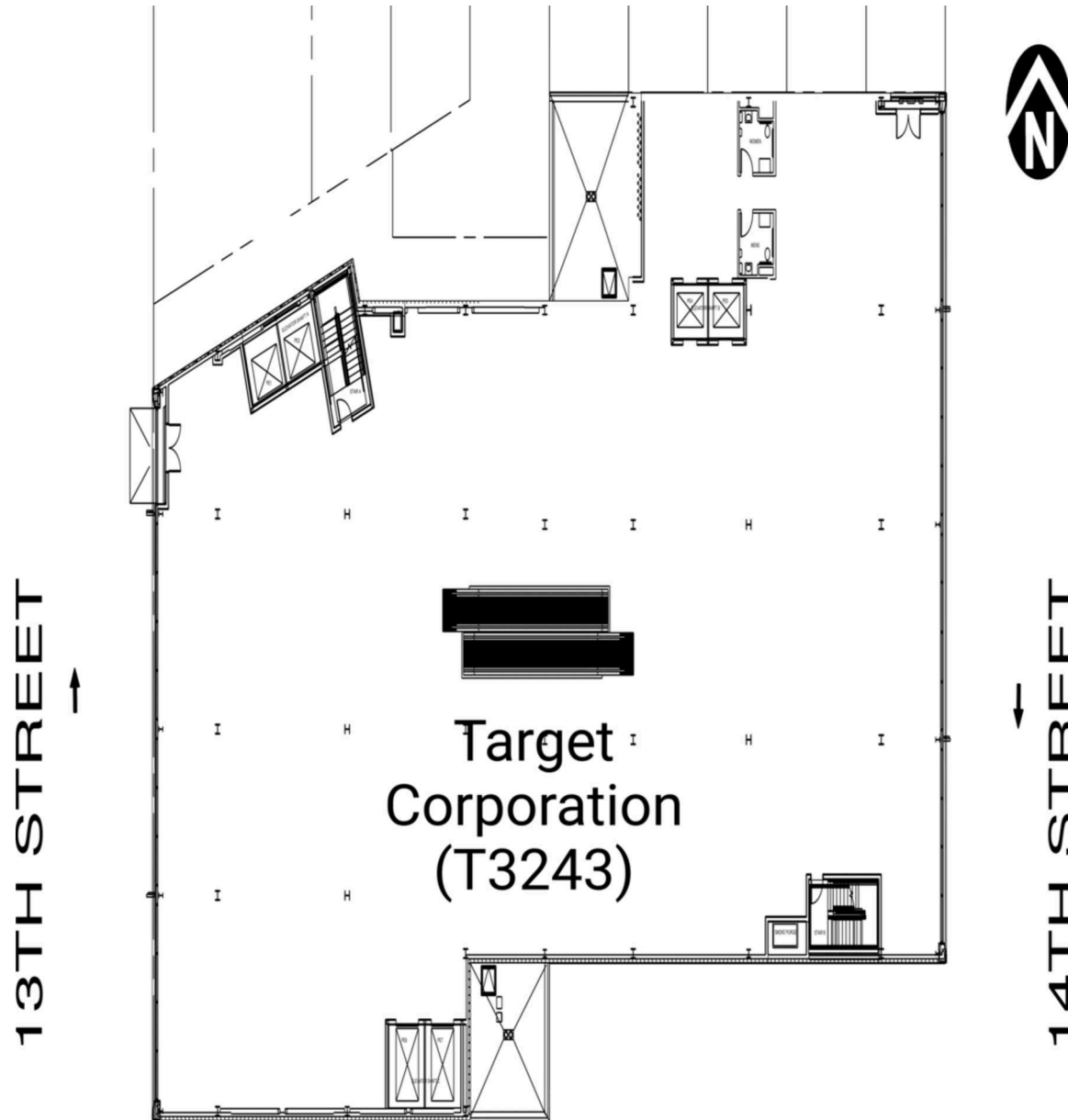
Retail Spaces (SF)

101	Marshalls	2,662
102	Target Corporation (T3243)	14,184

THIS EXHIBIT SHALL NOT BE DEEMED A WARRANTY, REPRESENTATION OR AGREEMENT BY LANDLORD THAT THE LAYOUT OR CONFIGURATION OF THE SHOPPING CENTER, OR ANY PART THEREOF, SHALL REMAIN AS SHOWN HEREON. LANDLORD RESERVES THE RIGHT TO MODIFY THE SHOPPING CENTER, OR ANY PART THEREOF, IN ACCORDANCE WITH THE PROVISIONS OF THE LEASE.

Kingswood Crossing

1715 E 13th Street, Brooklyn, NY 11229



Retail Spaces (SF)

201 Target Corporation (T3243)	19,542
--------------------------------	--------

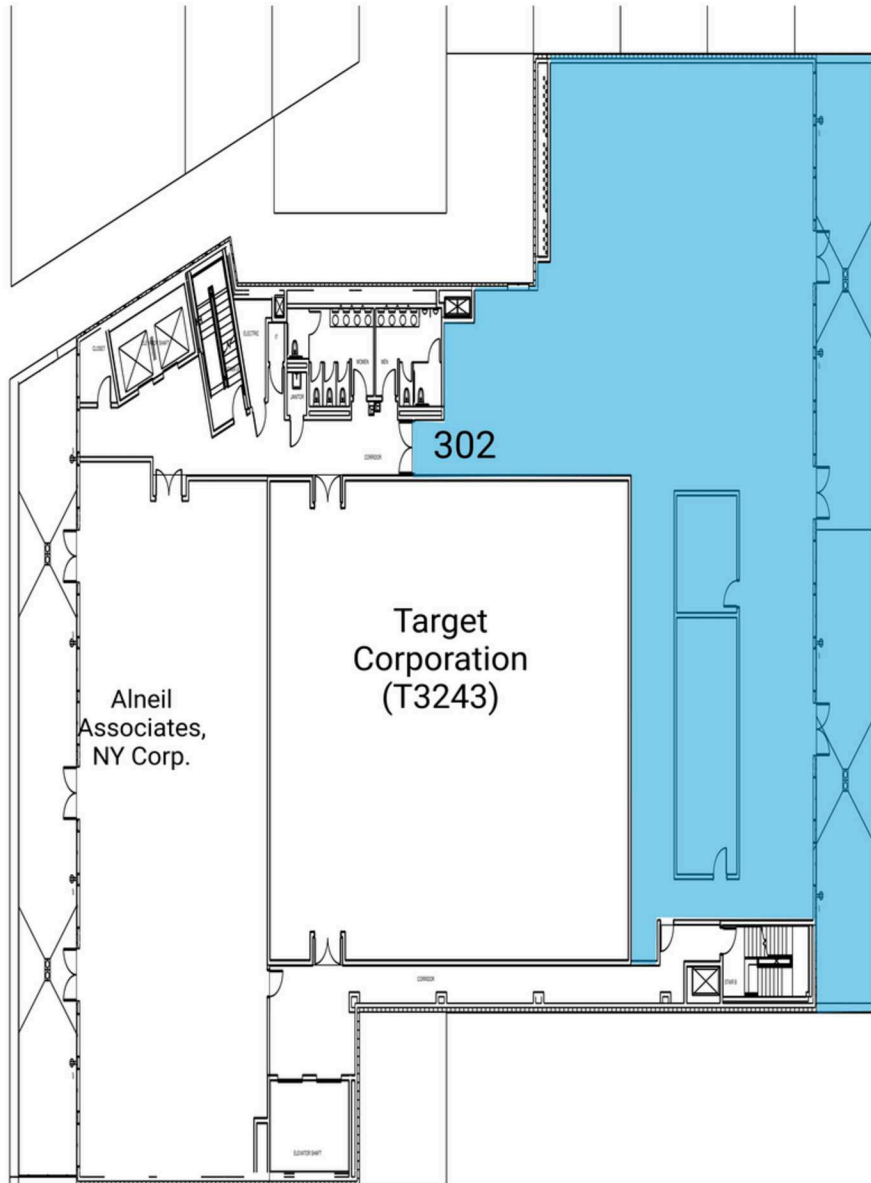
THIS EXHIBIT SHALL NOT BE DEEMED A WARRANTY, REPRESENTATION OR AGREEMENT BY LANDLORD THAT THE LAYOUT OR CONFIGURATION OF THE SHOPPING CENTER, OR ANY PART THEREOF, SHALL REMAIN AS SHOWN HEREON. LANDLORD RESERVES THE RIGHT TO MODIFY THE SHOPPING CENTER, OR ANY PART THEREOF, IN ACCORDANCE WITH THE PROVISIONS OF THE LEASE.

Kingswood Crossing

1715 E 13th Street, Brooklyn, NY 11229



13TH STREET



14TH STREET

Retail Spaces (SF)

301	Alneil Associates, NY Corp.	4,833
302	Available	7,800
303	Target Corporation (T3243)	4,355

THIS EXHIBIT SHALL NOT BE DEEMED A WARRANTY, REPRESENTATION OR AGREEMENT BY LANDLORD THAT THE LAYOUT OR CONFIGURATION OF THE SHOPPING CENTER, OR ANY PART THEREOF, SHALL REMAIN AS SHOWN HEREON. LANDLORD RESERVES THE RIGHT TO MODIFY THE SHOPPING CENTER, OR ANY PART THEREOF, IN ACCORDANCE WITH THE PROVISIONS OF THE LEASE.

Kingswood Crossing

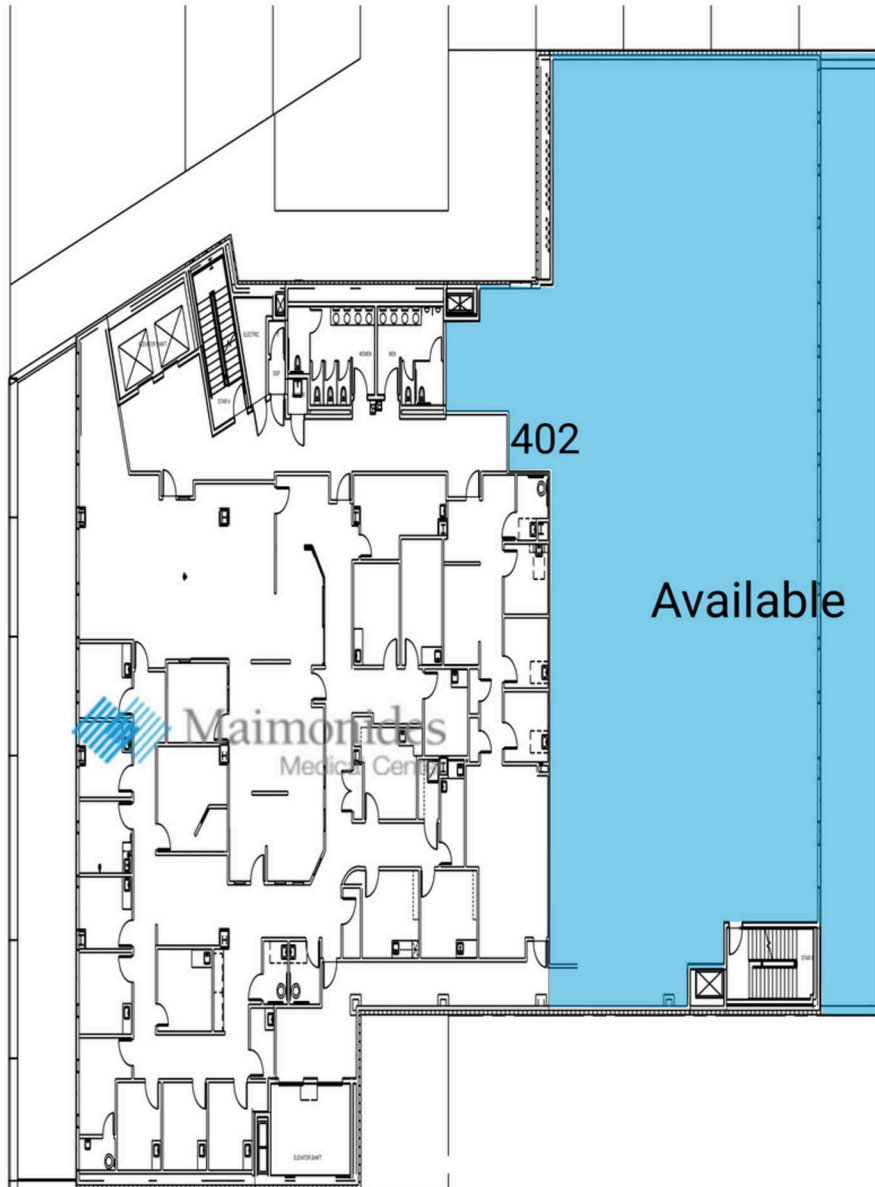
1715 E 13th Street, Brooklyn, NY 11229



Retail Spaces (SF)

401	Maimonides Medical Center	9,641
402	Available	8,856

13TH STREET



14TH STREET

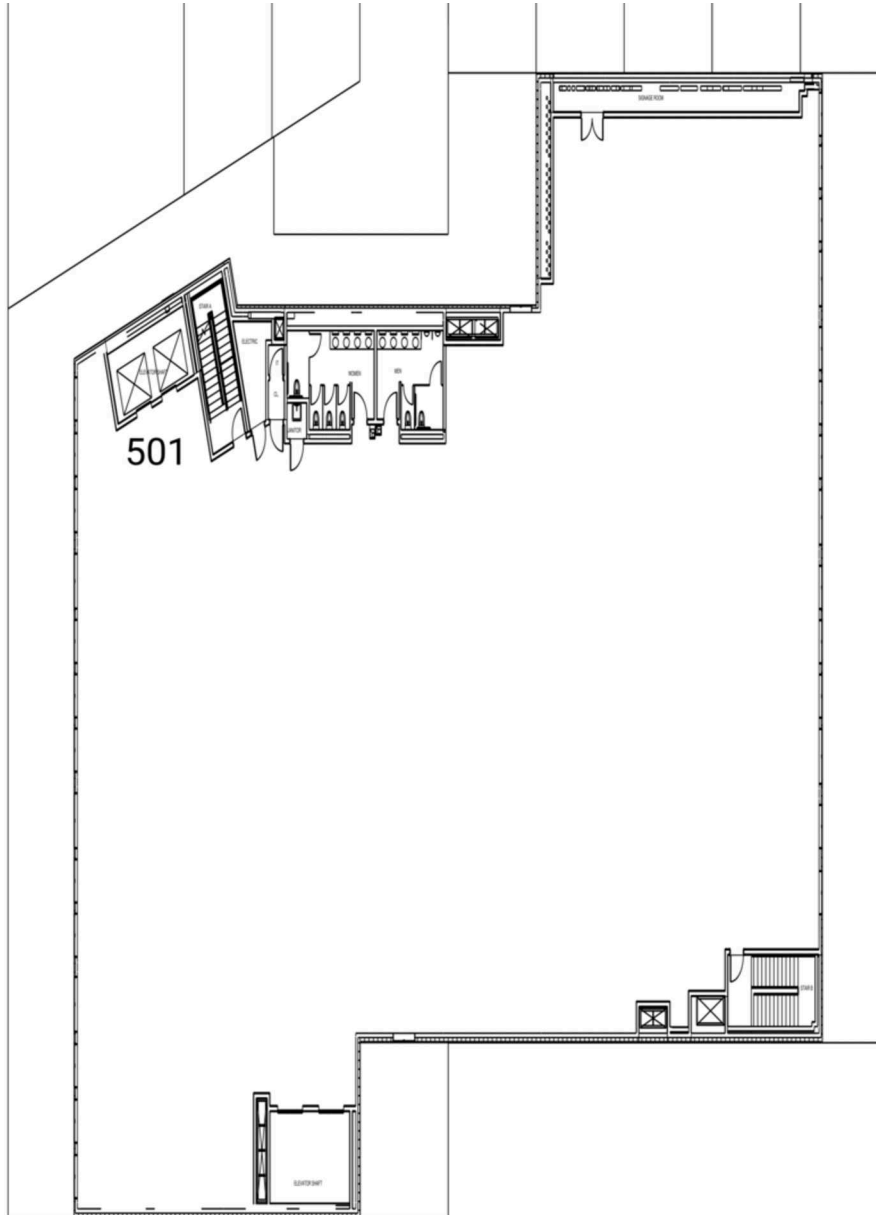
THIS EXHIBIT SHALL NOT BE DEEMED A WARRANTY, REPRESENTATION OR AGREEMENT BY LANDLORD THAT THE LAYOUT OR CONFIGURATION OF THE SHOPPING CENTER, OR ANY PART THEREOF, SHALL REMAIN AS SHOWN HEREON. LANDLORD RESERVES THE RIGHT TO MODIFY THE SHOPPING CENTER, OR ANY PART THEREOF, IN ACCORDANCE WITH THE PROVISIONS OF THE LEASE.

Kingswood Crossing

1715 E 13th Street, Brooklyn, NY 11229



13TH STREET



14TH STREET

Retail Spaces (SF)

501 VNS Health 21,737

THIS EXHIBIT SHALL NOT BE DEEMED A WARRANTY, REPRESENTATION OR AGREEMENT BY LANDLORD THAT THE LAYOUT OR CONFIGURATION OF THE SHOPPING CENTER, OR ANY PART THEREOF, SHALL REMAIN AS SHOWN HEREON. LANDLORD RESERVES THE RIGHT TO MODIFY THE SHOPPING CENTER, OR ANY PART THEREOF, IN ACCORDANCE WITH THE PROVISIONS OF THE LEASE.