

# Paramus (Bergen Town Center East)

2200 Bergen Town Center, Paramus, NJ 07652



GLA: 253,060 SF

Acres: 28.06

Parking Spaces: 1,328/Ratio: 5.24:1,000 SF

County: Bergen

## For Leasing Contact:

Leigh Lyons

Tel: 201-571-3508

llyons@uedge.com

UEDGE.COM

## Demographics: 3-Mile Radius



Population  
184,268



Households  
67,875



Daytime Pop.  
205,729



AHHI  
\$140,662



MHHI  
\$101,911



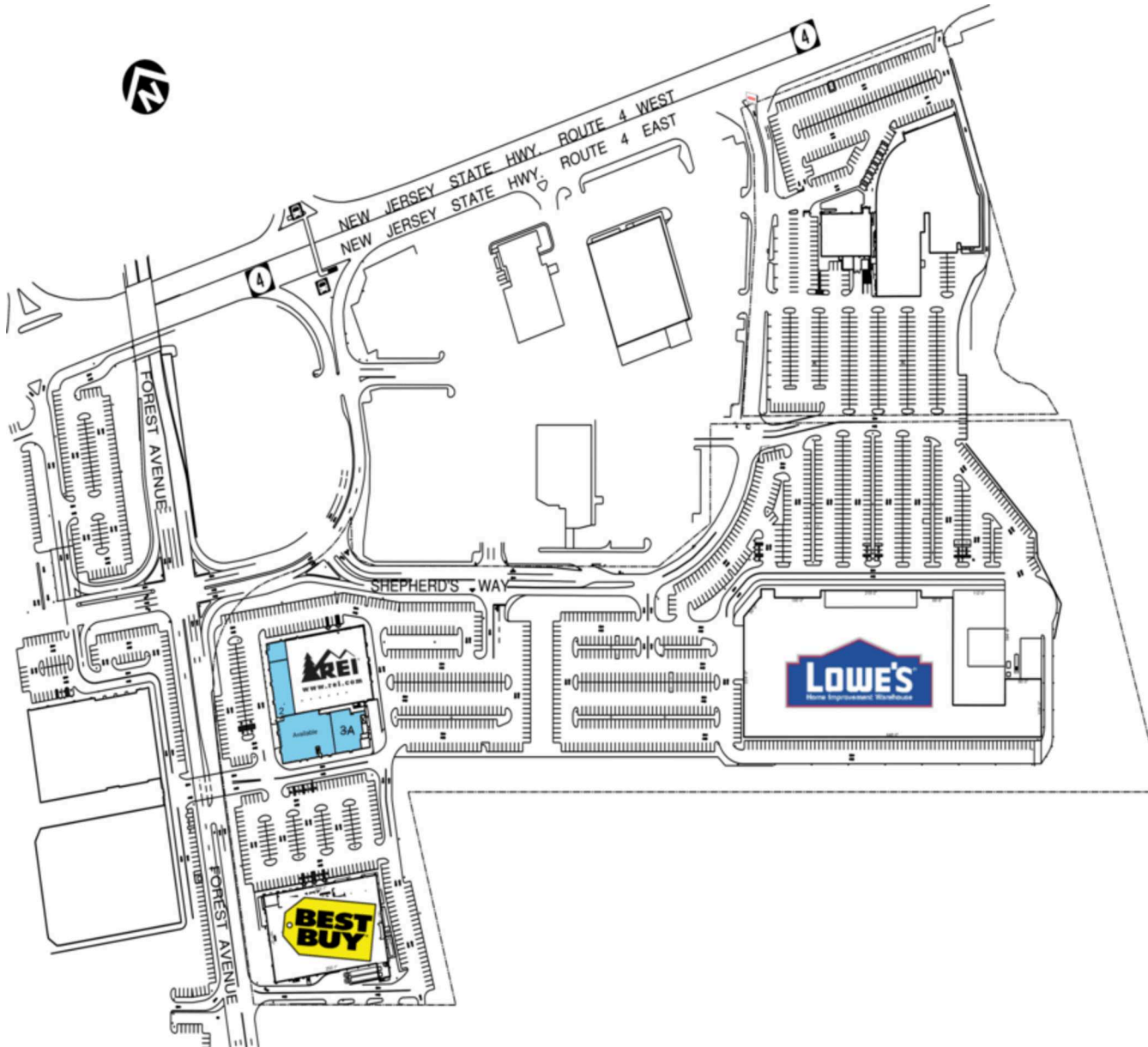
College Ed.  
50.1%

Demographics data Provided by: ESRI



# Paramus (Bergen Town Center East)

2200 Bergen Town Center, Paramus, NJ 07652



## Retail Spaces (SF)

1	Available	1,468
2	Available	4,295
03	Available	9,498
3A	Available	4,827
4	REI	24,252
5a	Lowe's	160,780
6	Best Buy	41,540

THIS EXHIBIT SHALL NOT BE DEEMED A WARRANTY, REPRESENTATION OR AGREEMENT BY LANDLORD THAT THE LAYOUT OR CONFIGURATION OF THE SHOPPING CENTER, OR ANY PART THEREOF, SHALL REMAIN AS SHOWN HEREON. LANDLORD RESERVES THE RIGHT TO MODIFY THE SHOPPING CENTER, OR ANY PART THEREOF, IN ACCORDANCE WITH THE PROVISIONS OF THE LEASE.

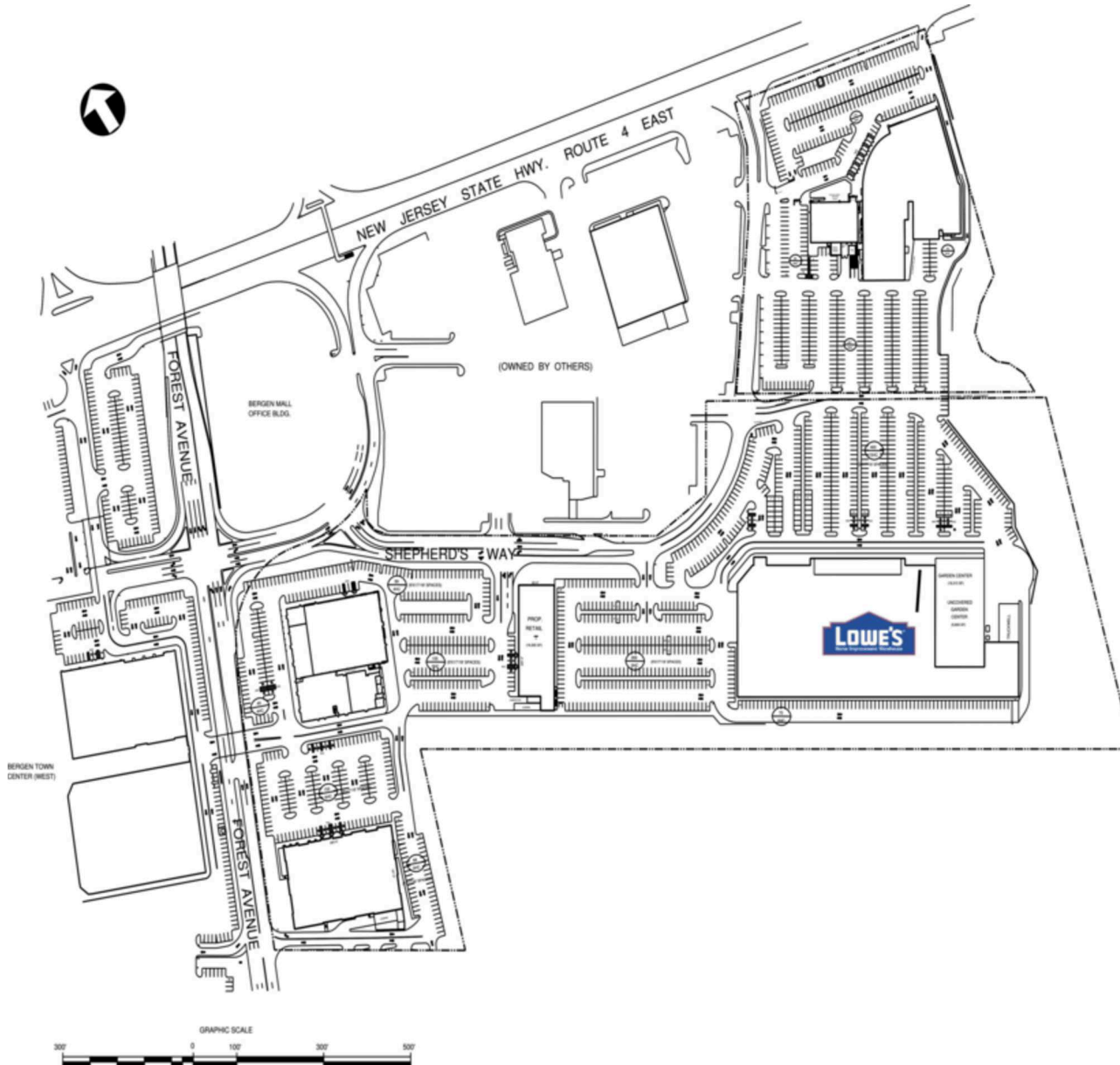
# Paramus (Bergen Town Center East)

2200 Bergen Town Center, Paramus, NJ 07652



## Retail Spaces (SF)

5b Lowe's 6,400



THIS EXHIBIT SHALL NOT BE DEEMED A WARRANTY, REPRESENTATION OR AGREEMENT BY LANDLORD THAT THE LAYOUT OR CONFIGURATION OF THE SHOPPING CENTER, OR ANY PART THEREOF, SHALL REMAIN AS SHOWN HEREON. LANDLORD RESERVES THE RIGHT TO MODIFY THE SHOPPING CENTER, OR ANY PART THEREOF, IN ACCORDANCE WITH THE PROVISIONS OF THE LEASE.