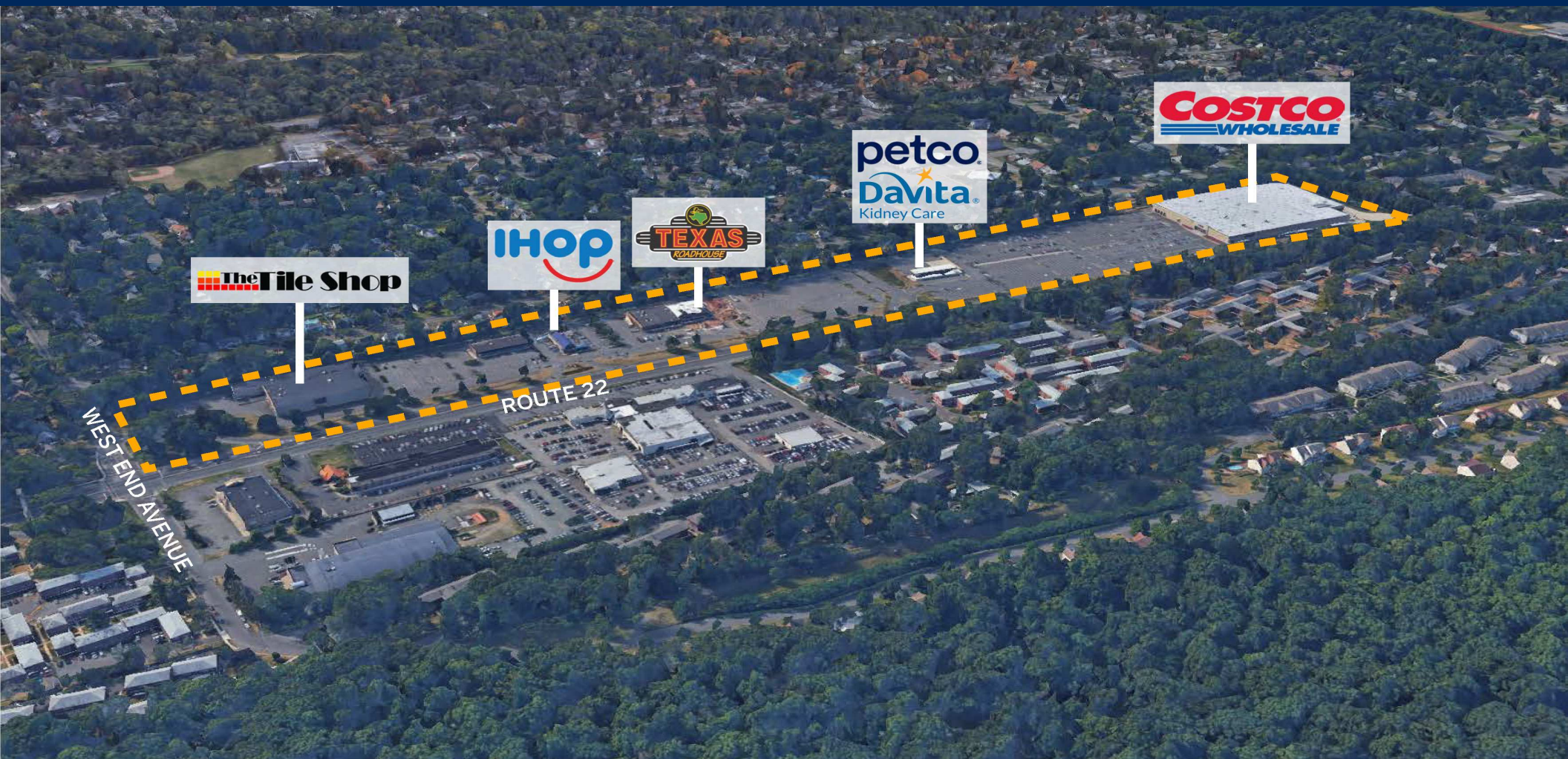


West End Commons

1200 Route 22 East, North Plainfield, NJ 07060



GLA: 241,038 SF

Acres: 28.99

Parking Spaces: 1,162/Ratio: 4.866 per 1,000sf SF

County: Union

For Leasing Contact:

Justin Lustig
Tel: 201-571-3515
jlustig@uedge.com
UEDGE.COM

Demographics: 3-Mile Radius


Population
122,742


Households
39,374


Daytime Pop.
101,325


AHHI
\$125,766


MHHI
\$87,558


College Ed.
32.5%

Demographics data Provided by: ESRI

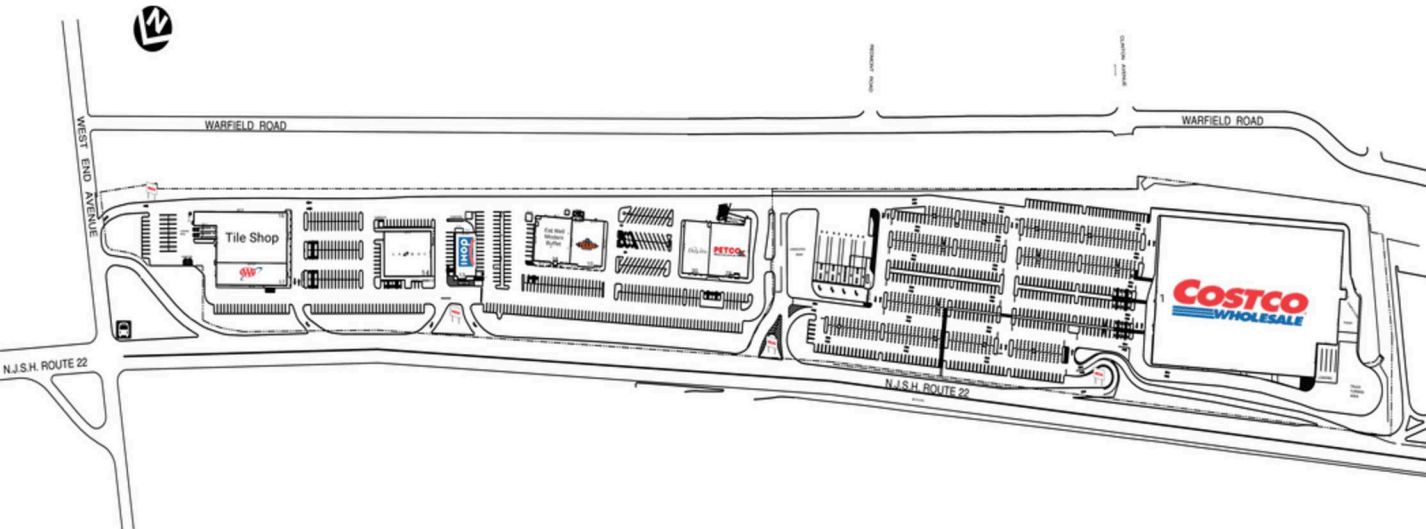
West End Commons

1200 Route 22 East, North Plainfield, NJ 07060



Retail Spaces (SF)

1	Costco	152,118
10	Texas Roadhouse	8,475
13	IHOP	5,527
14	La-Z-Boy	12,500
16	Tile Shop	23,003
17	AAA	9,290
28	Eat Well Modern Buffet	9,593
29	Petco	12,500
30	DaVita Dialysis	8,032



THIS EXHIBIT SHALL NOT BE DEEMED A WARRANTY, REPRESENTATION OR AGREEMENT BY LANDLORD THAT THE LAYOUT OR CONFIGURATION OF THE SHOPPING CENTER, OR ANY PART THEREOF, SHALL REMAIN AS SHOWN HEREON. LANDLORD RESERVES THE RIGHT TO MODIFY THE SHOPPING CENTER, OR ANY PART THEREOF, IN ACCORDANCE WITH THE PROVISIONS OF THE LEASE.