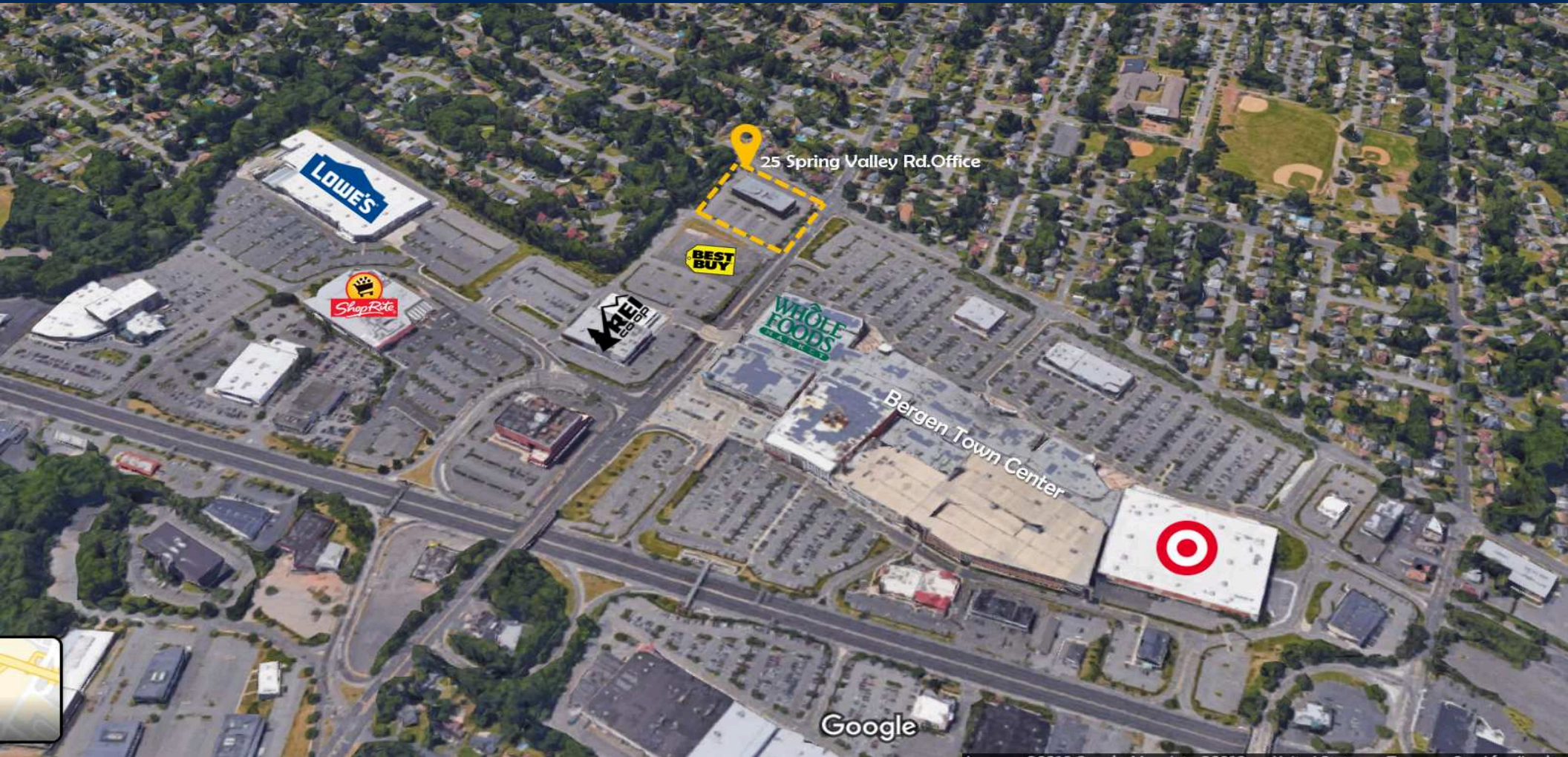


Spring Valley Office

25 East Spring Valley Ave, Maywood, NJ 07607



GLA: 43,541 SF

Acres: 2

Parking Spaces: 176/Ratio: SF

County: Bergen County

For Leasing Contact:

Leigh Lyons

Tel: 201-571-3508

llyons@uedge.com

UEDGE.COM

Demographics: 3-Mile Radius



Population
187,058



Households
69,066



Daytime Pop.
212,074



AHHI
\$138,470



MHHI
\$100,244

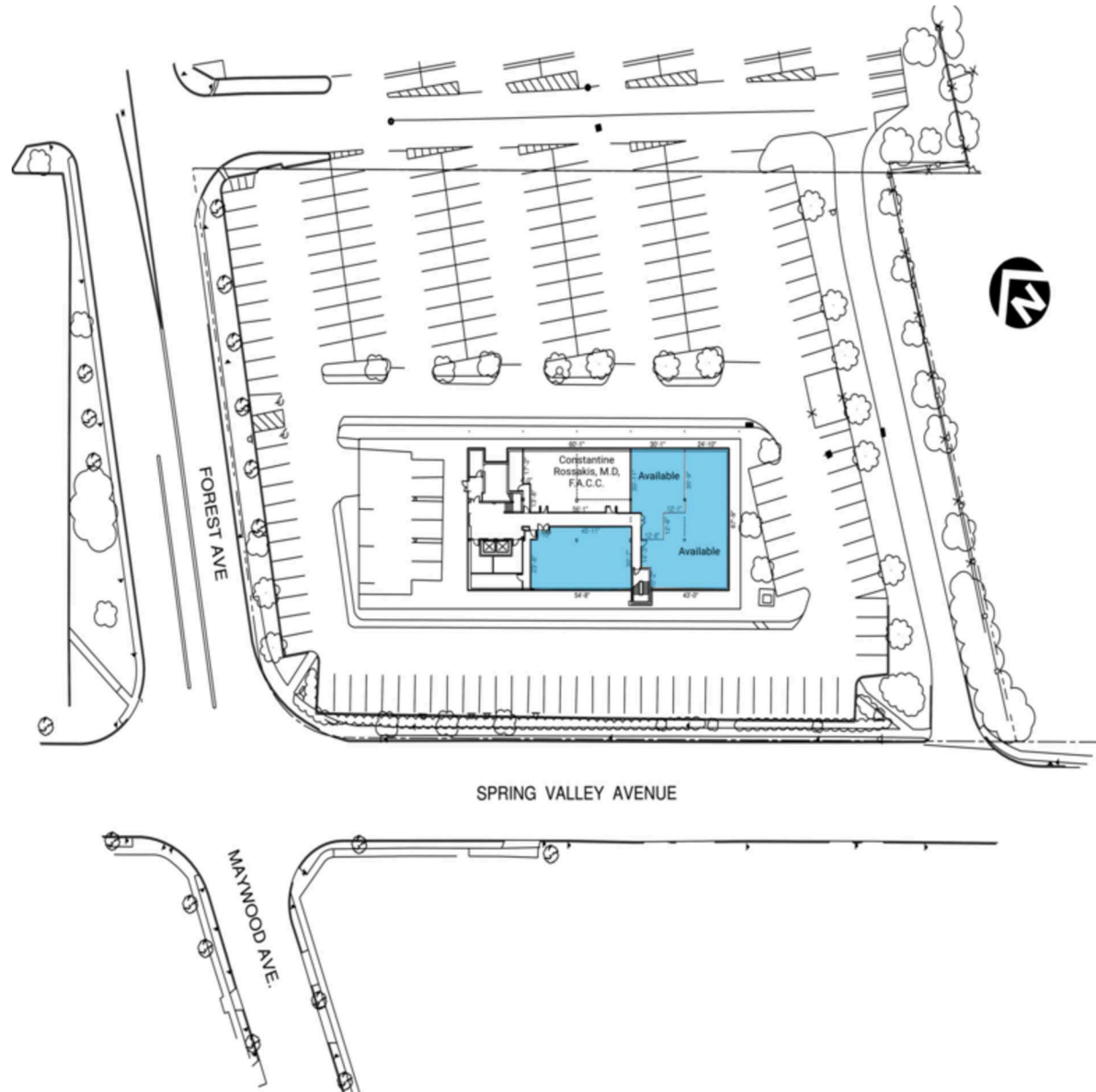


College Ed.
49.2%

Demographics data Provided by: ESRI

Spring Valley Office

25 East Spring Valley Ave, Maywood, NJ 07607



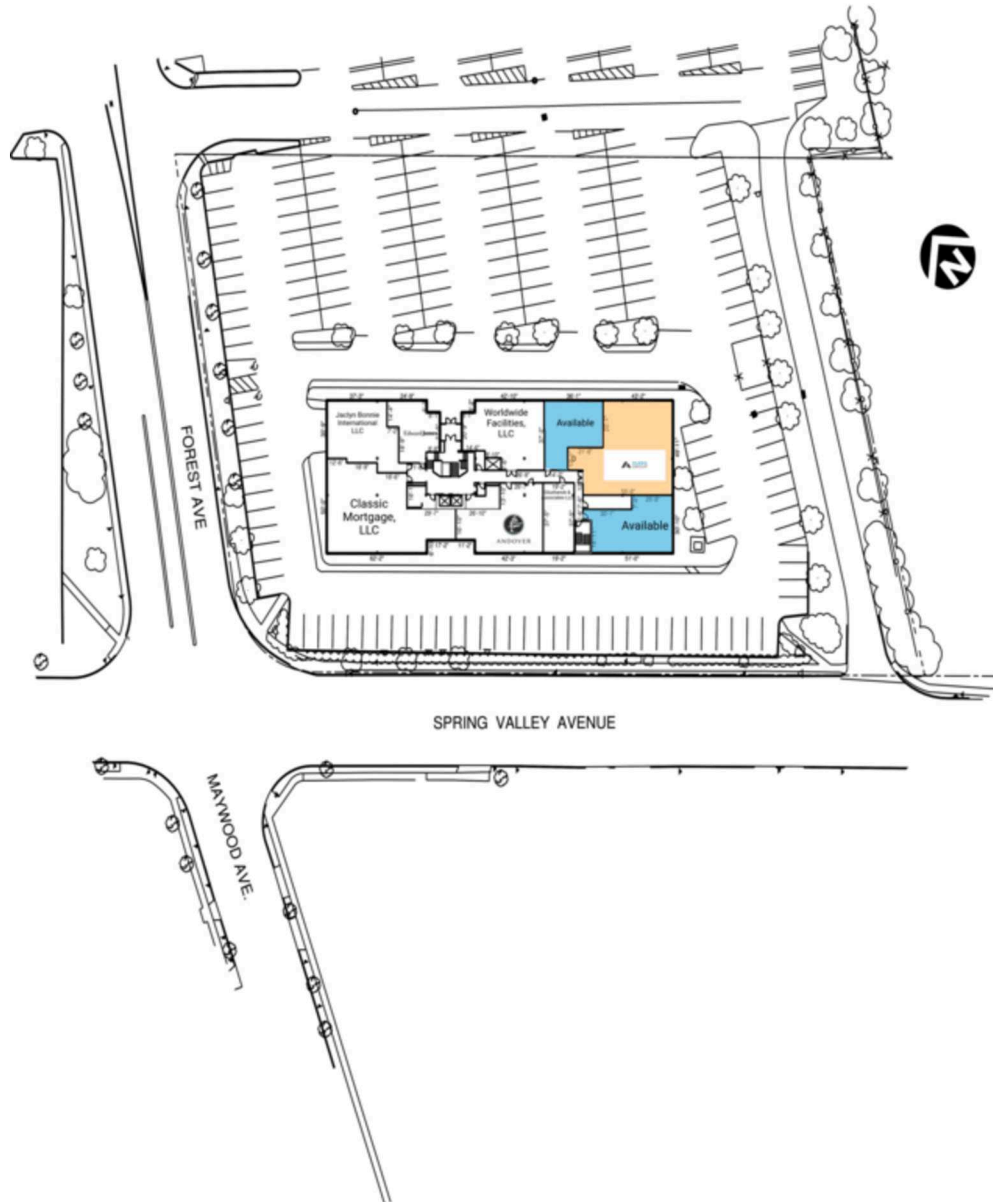
Retail Spaces (SF)

100	Constantine Rossakis, M.D, F.A.C.C.	2,165
150	Available	1,321
160	Available	2,868
190	Available	2,050

THIS EXHIBIT SHALL NOT BE DEEMED A WARRANTY, REPRESENTATION OR AGREEMENT BY LANDLORD THAT THE LAYOUT OR CONFIGURATION OF THE SHOPPING CENTER, OR ANY PART THEREOF, SHALL REMAIN AS SHOWN HEREON. LANDLORD RESERVES THE RIGHT TO MODIFY THE SHOPPING CENTER, OR ANY PART THEREOF, IN ACCORDANCE WITH THE PROVISIONS OF THE LEASE.

Spring Valley Office

25 East Spring Valley Ave, Maywood, NJ 07607



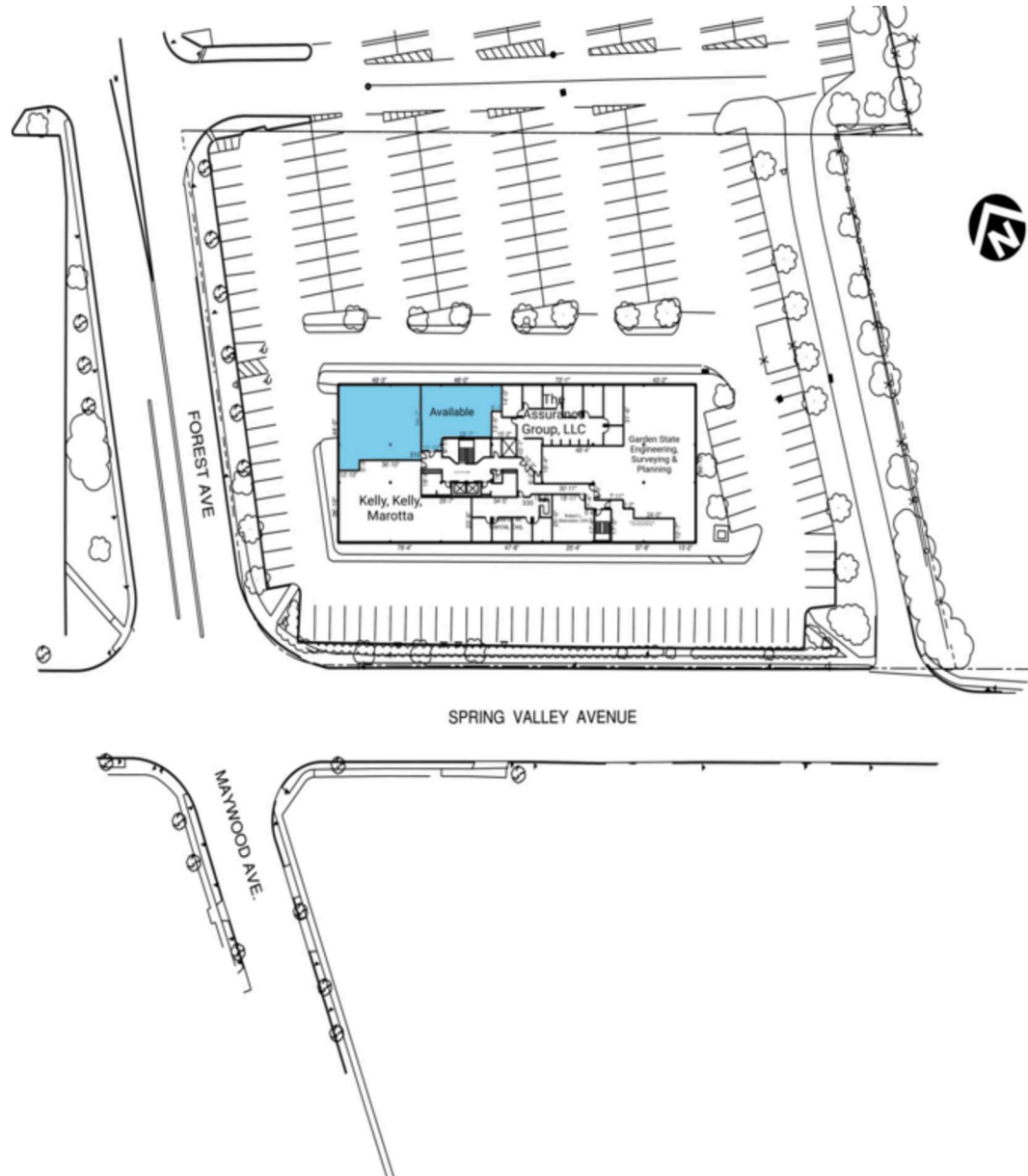
Retail Spaces (SF)

200	Edward D. Jones & Company	760
205	Jaclyn Bonnie International LLC	2,055
220	Classic Mortgage, LLC	3,538
240	Andover Capital	1,622
250	Glushanok & Associates LLC	1,099
260	Available	1,676
270	AleraGroup	3,089
280	Available	1,287
290	Worldwide Facilities, LLC	1,927

THIS EXHIBIT SHALL NOT BE DEEMED A WARRANTY, REPRESENTATION OR AGREEMENT BY LANDLORD THAT THE LAYOUT OR CONFIGURATION OF THE SHOPPING CENTER, OR ANY PART THEREOF, SHALL REMAIN AS SHOWN HEREON. LANDLORD RESERVES THE RIGHT TO MODIFY THE SHOPPING CENTER, OR ANY PART THEREOF, IN ACCORDANCE WITH THE PROVISIONS OF THE LEASE.

Spring Valley Office

25 East Spring Valley Ave, Maywood, NJ 07607



Retail Spaces (SF)

300	Available	1,632
310	Available	2,400
320	Kelly, Kelly, Marotta	3,302
330	Gilberto M. Garcia, Esq.	1,387
340	Robert L. Weinstein, CPA	700
345	Garden State Engineering, Surveying & Planning	750
350	Garden State Engineering, Surveying & Planning	4,942
360	The Assurance Group, LLC	2,971

THIS EXHIBIT SHALL NOT BE DEEMED A WARRANTY, REPRESENTATION OR AGREEMENT BY LANDLORD THAT THE LAYOUT OR CONFIGURATION OF THE SHOPPING CENTER, OR ANY PART THEREOF, SHALL REMAIN AS SHOWN HEREON. LANDLORD RESERVES THE RIGHT TO MODIFY THE SHOPPING CENTER, OR ANY PART THEREOF, IN ACCORDANCE WITH THE PROVISIONS OF THE LEASE.