

Plaza at Cherry Hill

2100 Route 38, Cherry Hill, NJ 08002



GLA: 418,811 SF

Acres: 42.68

Parking Spaces: 1,741/Ratio: 4.39:1,000 SF

County: Camden

For Leasing Contact:

Justin Lustig

Tel: 201-571-3515

jlustig@uedge.com

UEDGE.COM

Demographics: 3-Mile Radius



Population
117,783



Households
46,239



Daytime Pop.
119,776



AHFI
\$116,135



MHI
\$87,676

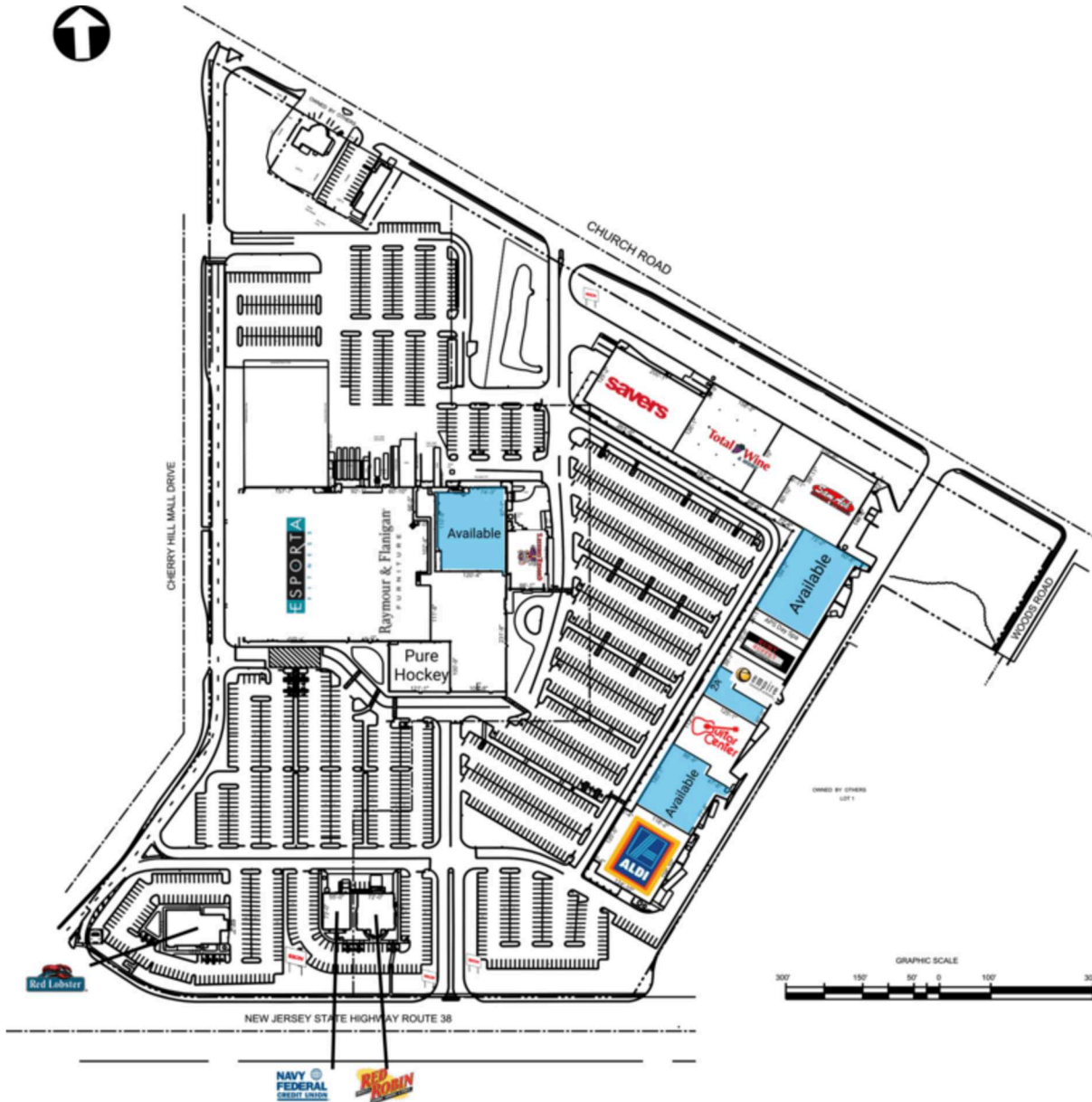


College Ed.
40%

Demographics data Provided by: ESRI

Plaza at Cherry Hill

2100 Route 38, Cherry Hill, NJ 08002



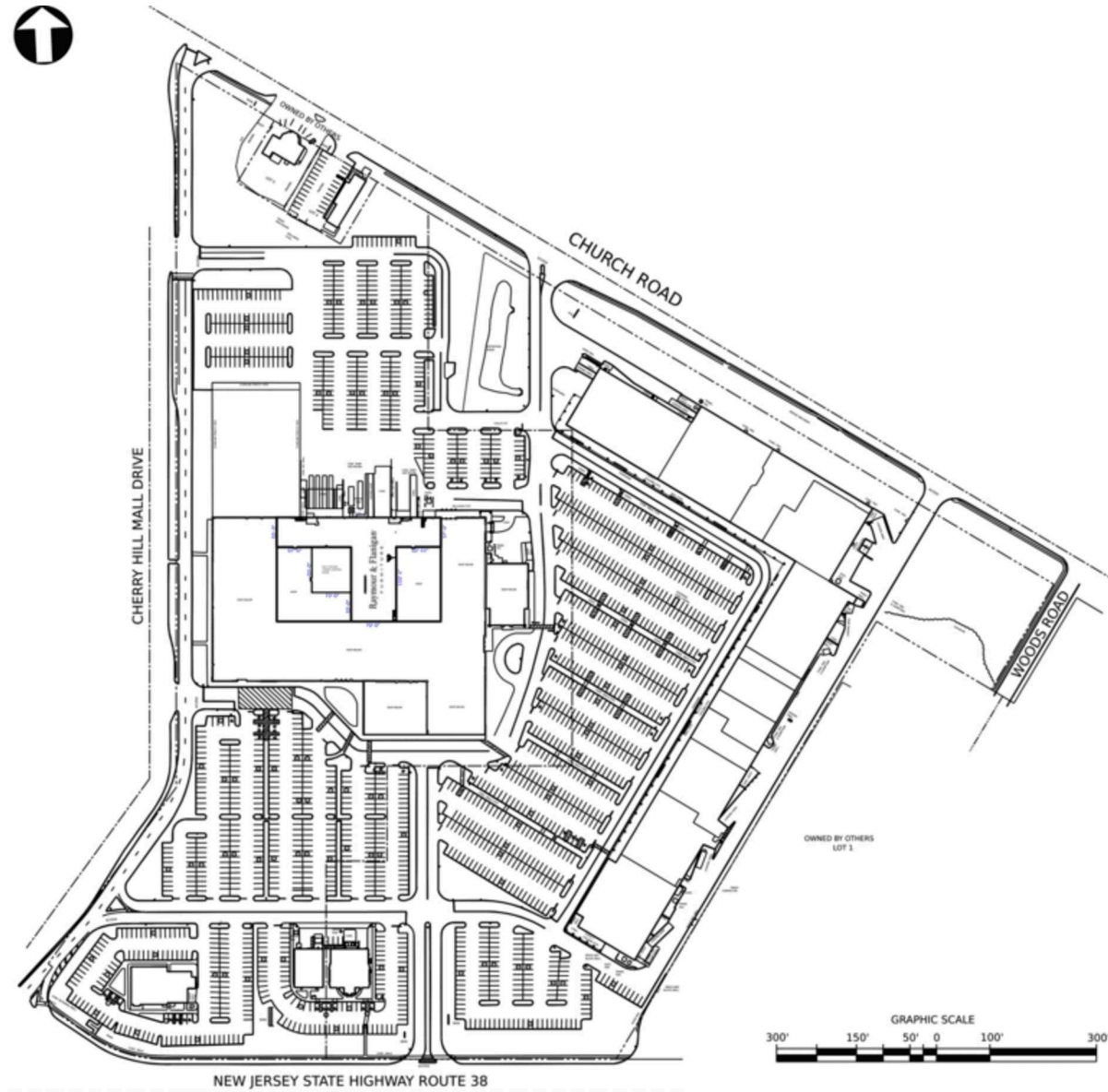
Retail Spaces (SF)

B	Esporta Fitness	65,838
C	Raymour & Flanigan	44,070
D1	Pure Hockey	12,000
E	Dick's Warehouse Store	32,000
F	Available	21,481
FS1	Red Lobster	7,545
FS2	Navy Federal Credit Union	4,000
FS3	Red Robin	6,000
G	Chuck E. Cheese	9,000
1A	Aldi Food Market	21,336
1B	Available	18,518
2A	Available	7,767
2AA	Guitar Center	15,800
3A	Empire Beauty School	7,000
4A	Ruby Buffet	8,750
5A	APS Day Spa	3,125
6A	Available	22,885
7A	Sam Ash	19,773
8A	Total Wine & More	38,532
10A	Savers	25,056

THIS EXHIBIT SHALL NOT BE DEEMED A WARRANTY, REPRESENTATION OR AGREEMENT BY LANDLORD THAT THE LAYOUT OR CONFIGURATION OF THE SHOPPING CENTER, OR ANY PART THEREOF, SHALL REMAIN AS SHOWN HEREON. LANDLORD RESERVES THE RIGHT TO MODIFY THE SHOPPING CENTER, OR ANY PART THEREOF, IN ACCORDANCE WITH THE PROVISIONS OF THE LEASE.

Plaza at Cherry Hill

2100 Route 38, Cherry Hill, NJ 08002



Retail Spaces (SF)

C2 Raymour & Flanigan 28,335

THIS EXHIBIT SHALL NOT BE DEEMED A WARRANTY, REPRESENTATION OR AGREEMENT BY LANDLORD THAT THE LAYOUT OR CONFIGURATION OF THE SHOPPING CENTER, OR ANY PART THEREOF, SHALL REMAIN AS SHOWN HEREON. LANDLORD RESERVES THE RIGHT TO MODIFY THE SHOPPING CENTER, OR ANY PART THEREOF, IN ACCORDANCE WITH THE PROVISIONS OF THE LEASE.